

FIELDWARE CONVERT

RELEASE NOTES

Fieldware Convert v1.03

August 2018

Fixes:

- Fixed issue when converting ESRI SHP files correcting error in Unit Type designation

Fieldware Convert v1.02

May 2018

Key Features and Benefits:

- Improved handling of ESRI data to handle numeric data coded as text
- Fixed bug when converting elevation data

NOTE: *There is a known issue within this release: Updating a previously installed version will not retain selected language. Please understand this only affects installation and not the everyday functionality of the software.*

Fieldware Convert v1.01

November 2017

Key Feature and Benefit:

- Adds support for Danish, Dutch, French, German, Italian, Polish, Russian, Spanish, and Swedish

Fieldware Convert v1.00

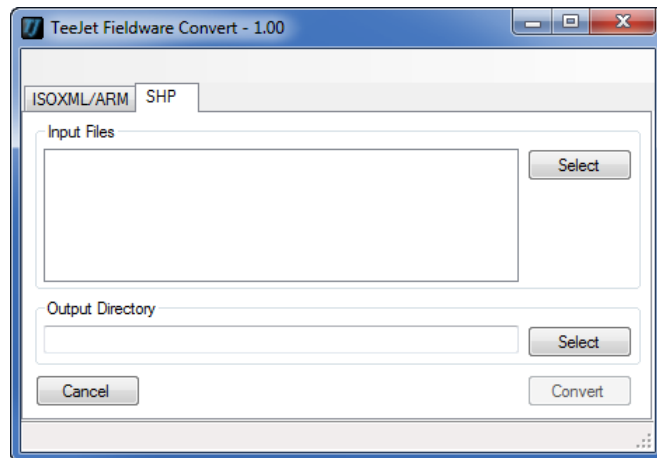
November 2017

Key Features and Benefits:

- First release of Fieldware Convert
- Converts FMIS prescription data into Job Data compatible with TeeJet consoles running Lonepeak 4.3x software.
- Fieldware Convert supports the following FMIS prescription file formats:
 - ISO-11783 ISOXML
 - ESRI Shapefile (SHP)
 - Mid-Tech/TeeJet ARM

See *bulletin 98-01533* for more details on the supported formats.

FIELDWARE CONVERT v1.00



FIELDWARE CONVERT v1.01

