

**FITTINGS INSTRUCTIONS
FOR
LH 1200 S**

LH No. 010-202-UK

LH Technologies Denmark ApS

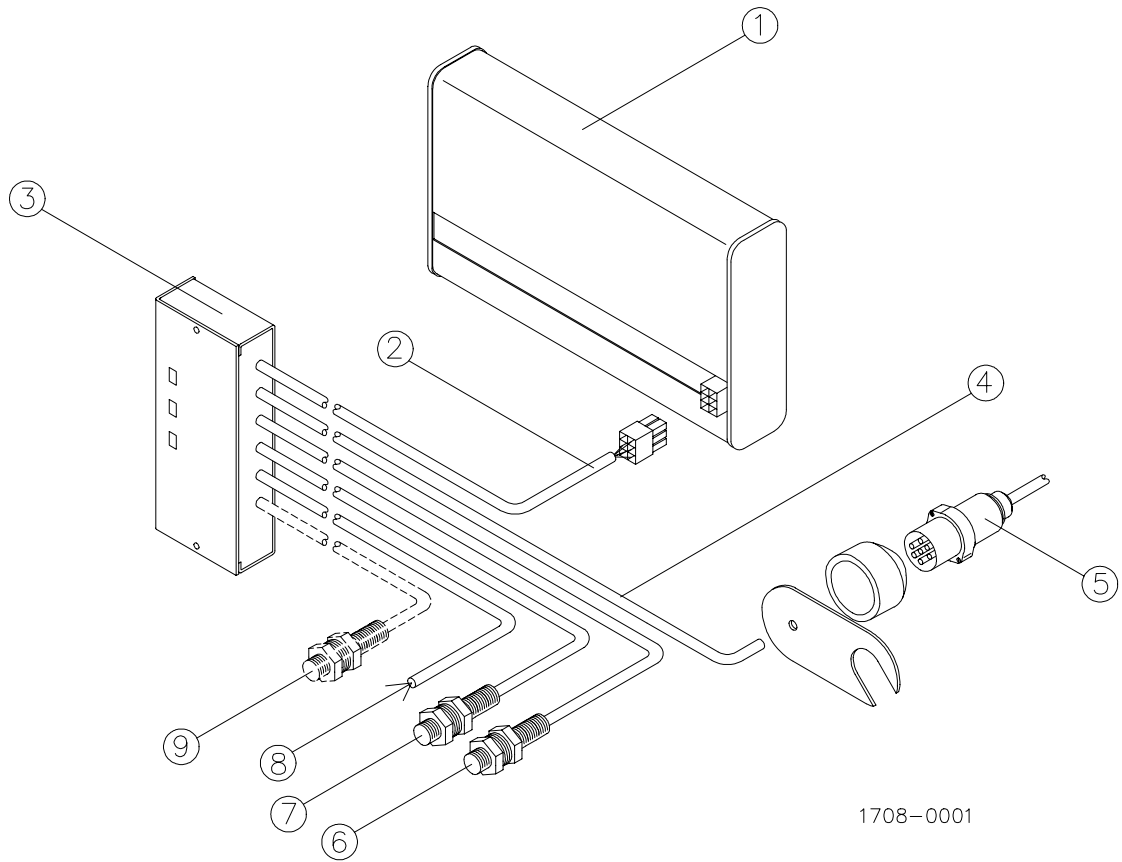
Mølhavevej 2
9440 Aabybro
Denmark

Tel. +45 9696 2500

Fax. +45 9696 2501

Internet: <http://www.lh-agro.com/>

KEY DIAGRAM



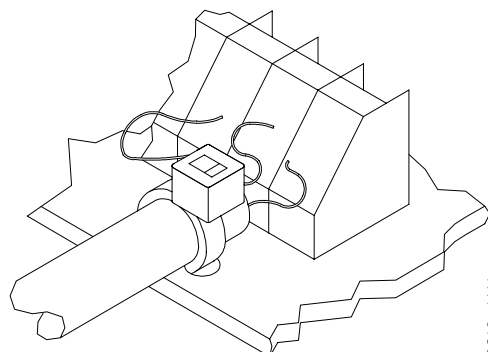
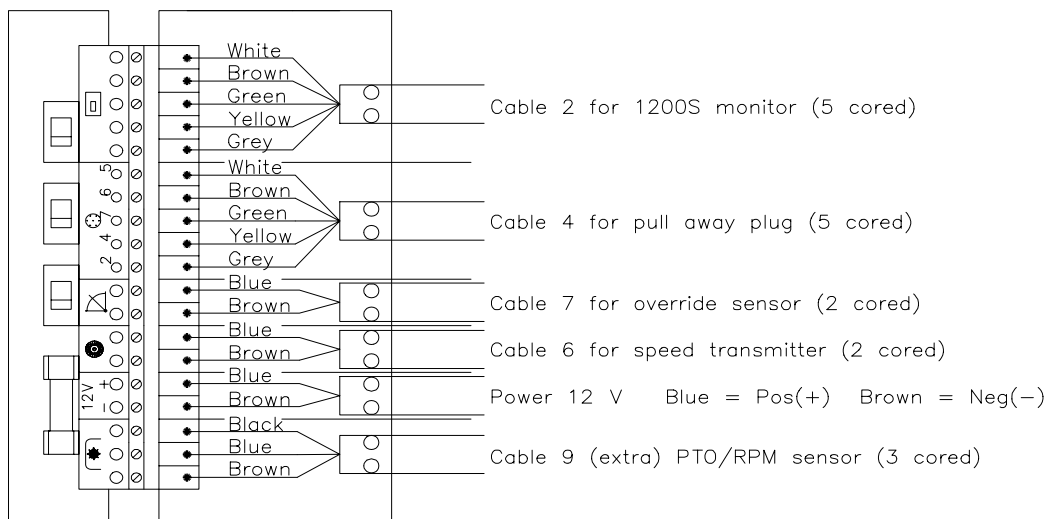
Pos.	Description
1	1200 S monitor
2	5 core connection cable
3	Junction box
4	Trailer socket cable
5	Trailer plug
6	Wheel sensor (2 core)
7	Override sensor (2 core)
8	Power 12V
9	(Optional) PTO/RPM sensor (3 core)

HOW TO MOUNT THE 1200 S

- Monitor:** Place the unit in the cabine. Check location of the junction box and ensure right cable length.
- Junction box:** Place the unit in the cabine (Note: two versions! - with or without switches. Only junction boxes with switches can be connected to a PTO/RPM sensor).
- Pull away plug:** Mount on the near side of the tractor (see diagram).
- Speed transmit:** Mount on the right rear wheel (see diagram). If you wish to measure, using a 4 WD drive shaft you must use a special sensor. A description of these follow.
- Override sensor:** Mount on the tractors lift arms (see diagram).
- Power:** Always connect through the ignition switch
- PTO/RPM:** (Extra) Sensor to measure revolutions (PTO-motors etc.). The sensor set including a magnet ring for axels need to be ordered separatly.

CONNECTIONS IN THE JUNCTION BOX

FOLLOW THE COLOUR CODES ON THE CIRCUIT BOARD AN CABLES

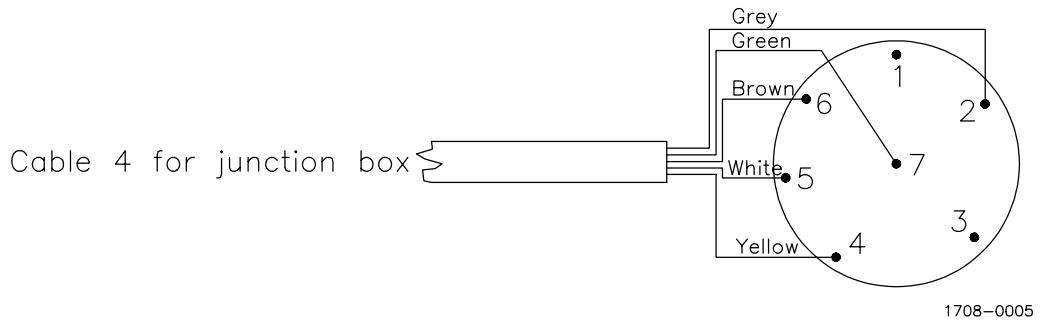


9219-1111

Attach all cables to the circuit board using the supplied straps.

CONNECTIONS IN THE PULL AWAY PLUG

(Seen from the mounting side)



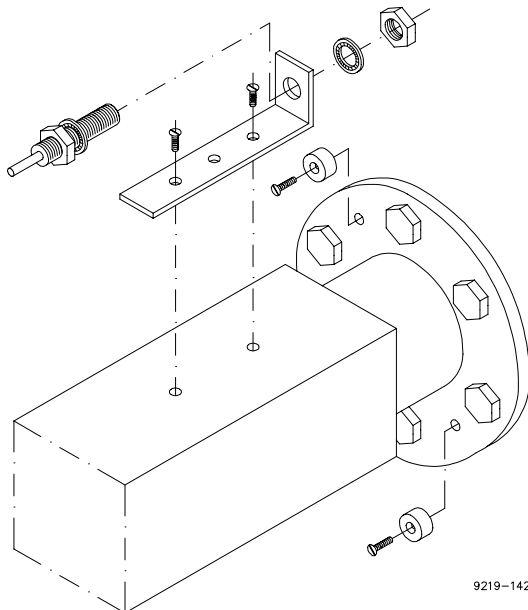
Note: The special 7-poled plug allows connection of many different types of sensors on machines and implements (eg. count, flow and RPM).

See the different possibilities on the last page.

Signals in the 7-poled plug:

Pin 1	N/A
Pin 2	Flow or RPM
Pin 3	N/A
Pin 4	Speed transmitter
Pin 5	0 V (negative)
Pin 6	12 V (positive)
Pin 7	Override sensor

HOW TO MOUNT THE SPEED TRANSMITTER



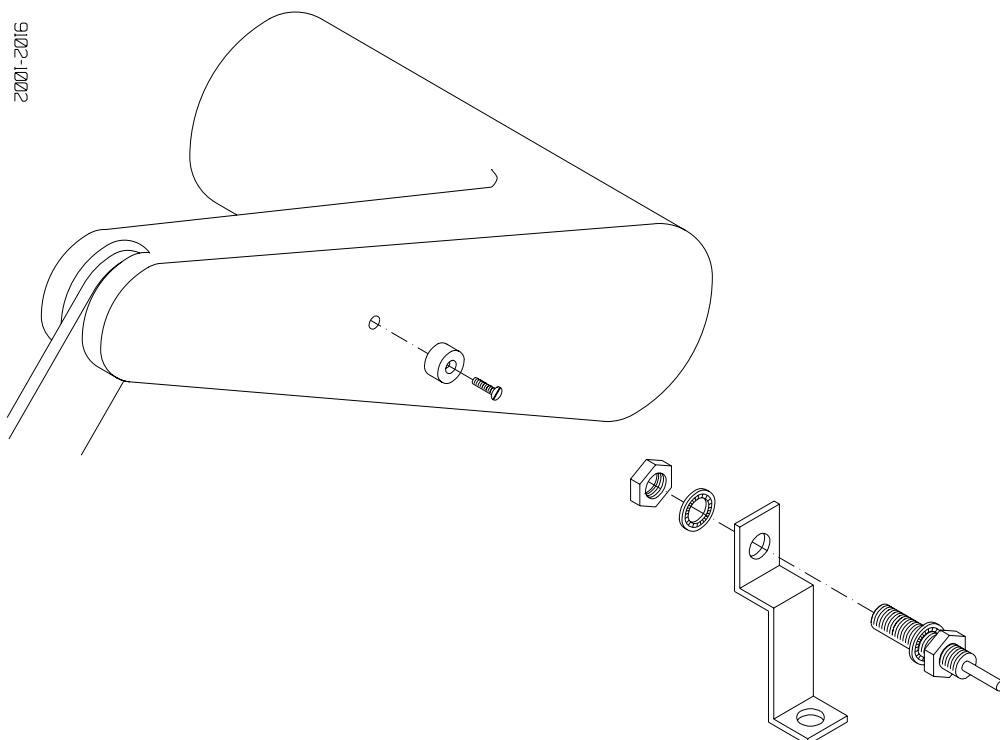
Note:

Mount 2 magnets on the navel (180° apart), use the wheel bolts for precision. The yellow marks (south) **must** face the sensor.

You can glue the magnets. The gap between the magnets and sensor must **not** exceed 5 mm.

Take care when tightening the sensor (tighten lightly).

HOW TO MOUNT THE OVERRIDE SENSOR



Example of where to place the override sensor

Note: If you wish the override sensor can be mounted on the PTO handle or other similar handles. This is possible as long as there is at least 50 mm movement.

USING AN ELECTRICAL SIGNAL FOR OVERRIDE SENSOR

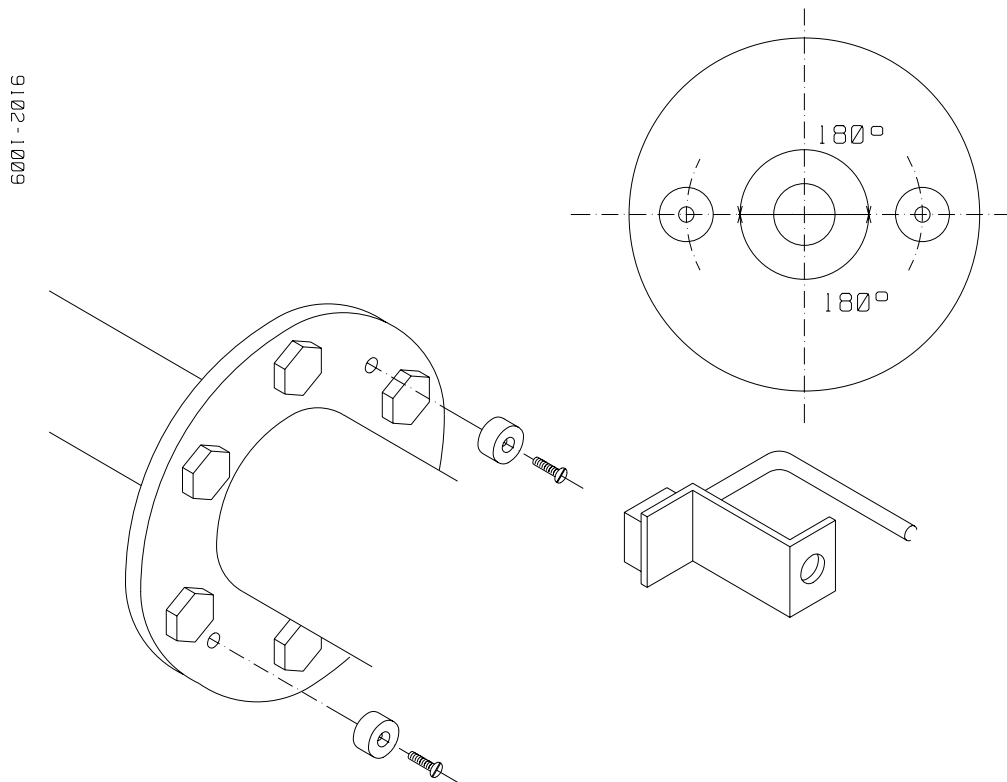
The override sensor can be replaced with an electrical signal from other sources, the tractors electronic hydraulics system (lift/PTO, etc, etc). An electrical signal from a fertiliser spreader, sprayer or similar can also be used.

Note: A ground signal (0V) is nessecary to override the area counter!

Meaning that a switch that sends a ground signal in the "off" position can be used (a 12 V signal in the "on" position does not matter)

Important: Such a signal as mentioned above **may only be connected** to the blue terminal on the override entrance in the junction box **or** pin 7 in the pull away plug.

ALTERNATIVE SPEED TRANSMITTER ON A DRIVE SHAFT



It is preferable on 4 wheel drive tractors, where it is possible to mount a speed transmitter on the drive shaft, to use this possibility. This requires an other sensor than the one supplied as standard in the set. This is shown on the diagram. A bipolar sensor must be used as long as the drive shaft method is used. This sensor is a different type than the sensor delivered as standard, and must be ordered seperatly (LH no. 12-900-984).

The distance between sensor and magnets must be 2-3 mm when using this type of sensor, the 2 magnets **must** be opposite, one north pole and one south pole facing the sensor.

HOW TO CONNECT DIFFERENT SENSORS ON IMPLEMENTS TO THE 7 PIN LH TRAILER PLUG

(Note: View from mounting in plug (thr pins are numbered))

SPRAYER

SENSOR	CABLE COLOUR	PIN NO.
FLOWMETER	Blue	5
	Brown	2
	Black	6
SPEED SENSOR	Blue	4
	Brown	5
OVERRIDE SENSOR	Blue	7
	Brown	5

FERTILISER

SENSOR	CABLE COLOUR	PIN NO.
REVOLUTIONS	Blue	6
	Brown	5
	Black	2
SPEED SENSOR	Blue	4
	Brown	5
OVERRIDE SENSOR	Blue	7
	Brown	5

Mounting set for flowmeters are ordered seperatly for the right spray armatur.

DRILL

SENSOR	CABLE COLOUR	PIN NO.
REVOLUTION SENSOR ON THE AXEL	Blue	6
	Brown	5
	Black	2
SPEED TRANSMITTER	Blue	4
	Brown	5
OVERRIDE SENSOR	Blue	7
	Brown	5

BALER

SENSOR	CABLE COLOUR	PIN NO.
UNIT COUNTER	Blue	2
	Brown	5
REVOLUTIONS	Blue	6
	Brown	5
	Black	2

SLURRYTANKER

SENSOR	CABLE COLOUR	PIN NO.
FLOW METER	+ 12 V	6
	0 V	5
	Signal	2
SPEED SENSOR	Blue	4
	Brown	5
OVERRIDE SENSOR	Blue	7
	Brown	5

NOTES
