

VRA APPLICATIONS

FIELDWARE LINK AND MATRIX PRO GS GUIDE FOR SELECTED CUSTOMERS

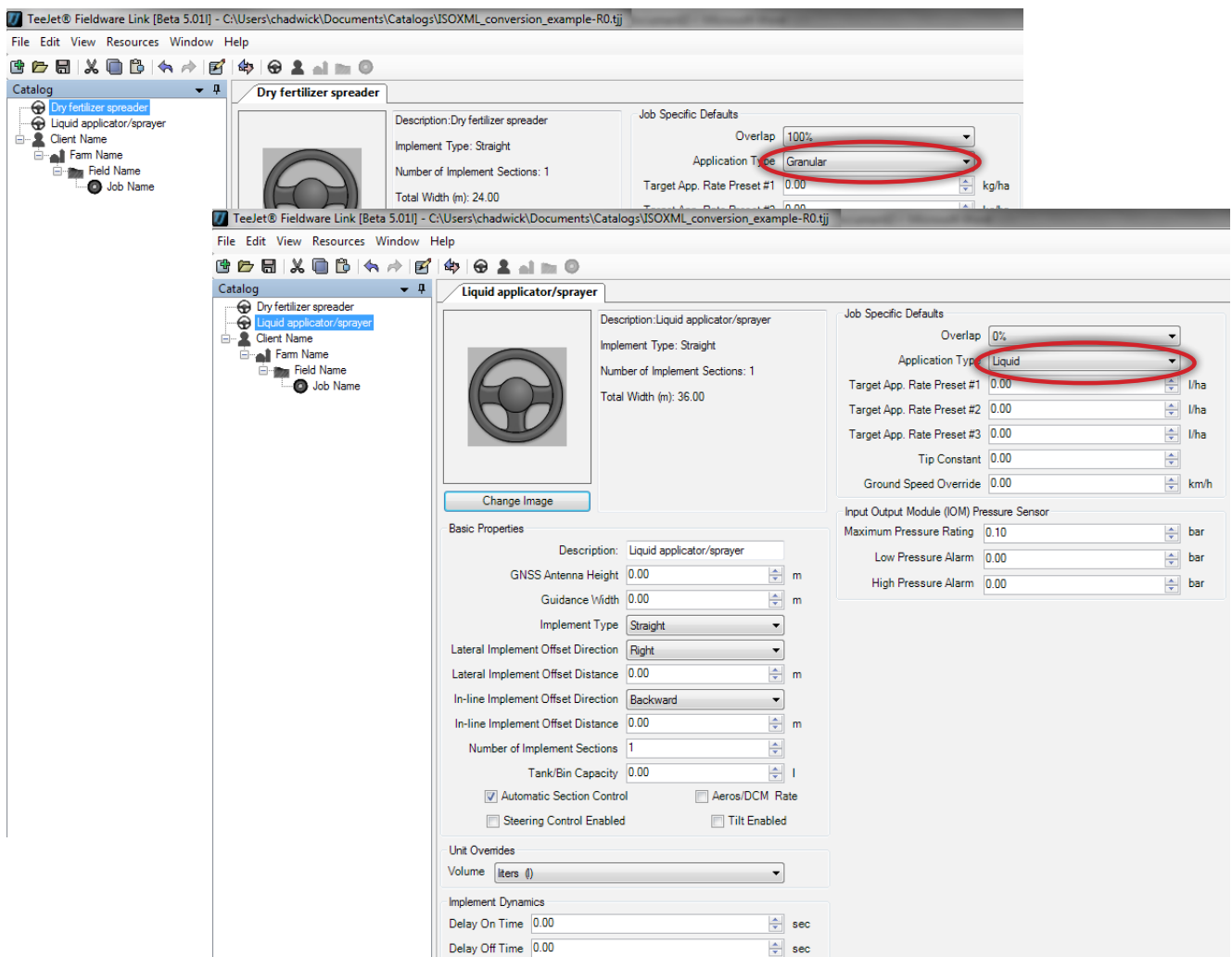
The following instructions may help TeeJet Beta Test customers start using TeeJet Fieldware Link v5.01 to prepare jobs for VRA applications using ISOXML prescription files, Matrix Pro GS consoles, and compatible rate controllers. While Fieldware Link can be used to create detailed Machine profiles that can be transferred into Matrix Pro GS consoles, these instructions detail the minimum requirements to create jobs in Fieldware Link. The basic Machine profiles used in these examples will be transferred to the USB Drive when the VRA jobs are exported, but they should not be transferred/loaded into the Matrix Pro GS console. As an alternative, power users are welcome to build complete Machine profiles in Fieldware Link, use those profiles to create VRA jobs, and load both the Machine profiles and jobs in their Matrix Pro GS console.

Requirements:

1. Please use Fieldware Link v5.01h or later for this work.
2. It is recommended that the Matrix Pro GS console be running v4.11k or later.
3. The Matrix Pro GS must be unlocked for the function 'Rate Control'.
4. The Matrix Pro GS setting Configuration->Data->Options\Job Mode must be set to 'Advanced' in order to allow VRA applications.

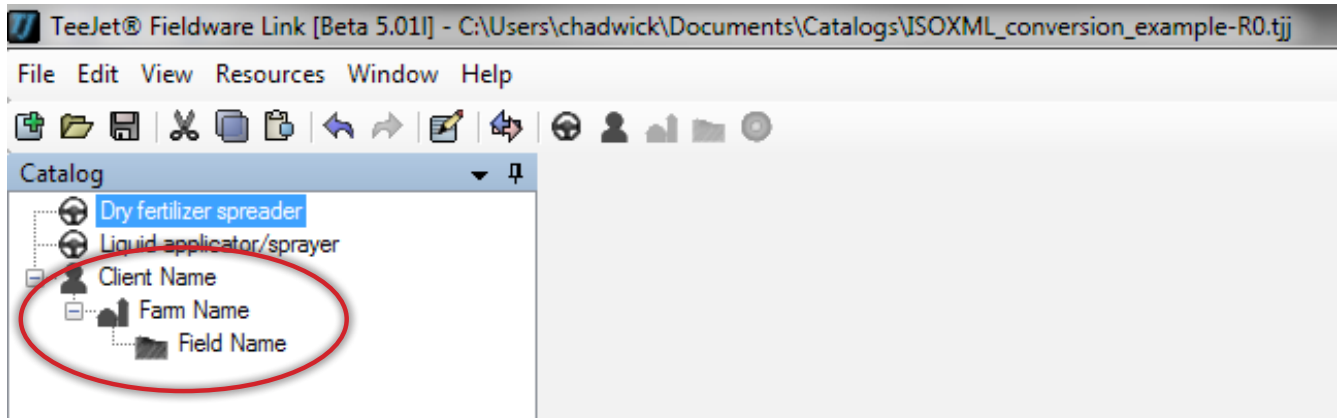
1. BUILD A BASIC DRY FERTILIZER AND/OR BASIC LIQUID APPLICATOR/SPRAYER MACHINE PROFILE

NOTE: the only values that are critical in these profiles are outlined in red



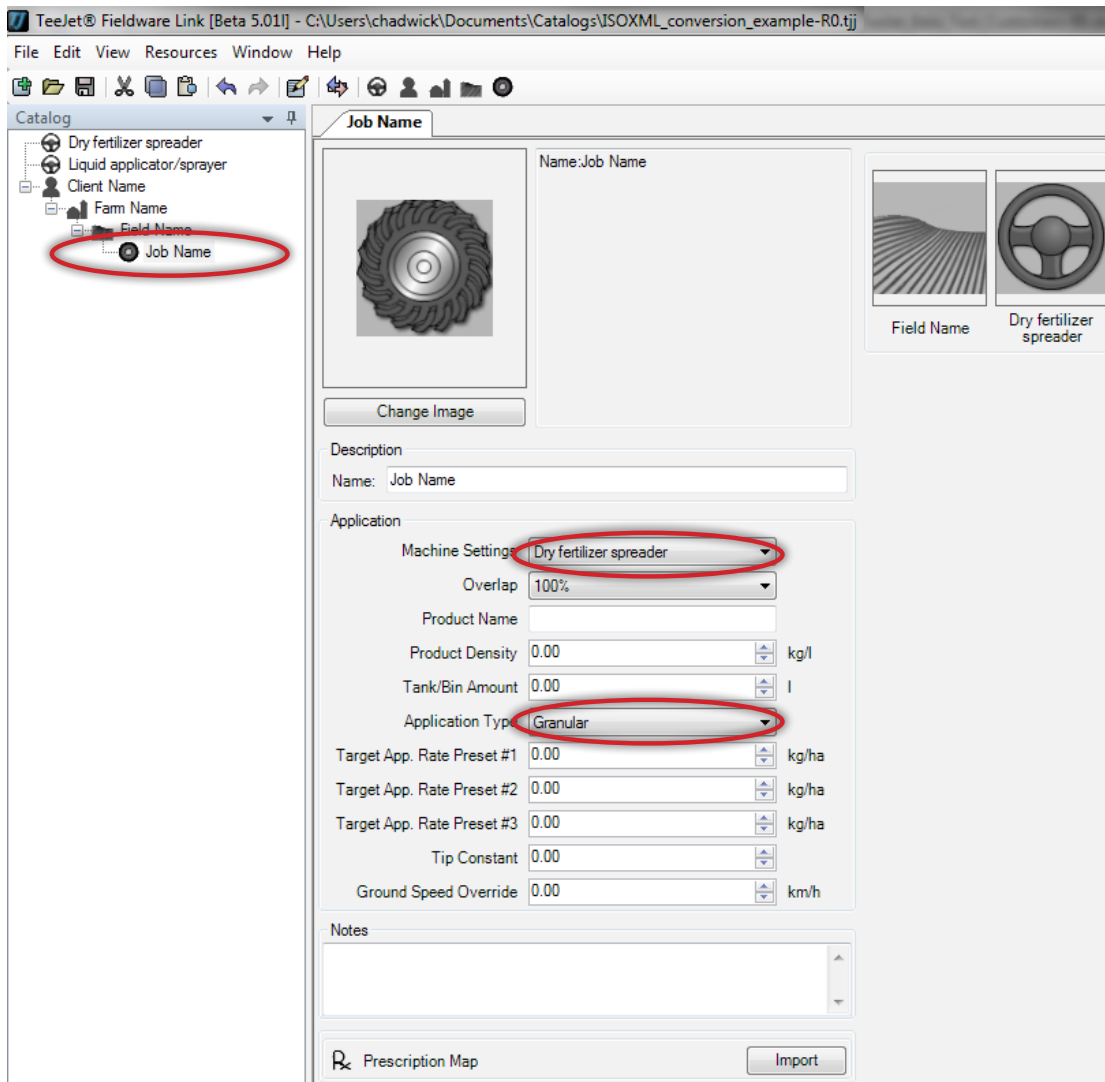
2. BUILD THE CLIENT/FARM/FIELD STRUCTURE

All jobs in Fieldware Link are organized in the industry standard Client/Farm/Field hierarchy. Build this structure as shown below, naming each Object in a manner that is easy for the user to recognize. Repeat as necessary for multiple Clients, Farms, and Fields. None of the values within each of the Client/Farm/Field tabs are critical or required to build a VRA job.



3. CREATE A JOB

Create a job within the appropriate field. It is critical at this point that the 'Machine Settings' selected is appropriate for the application planned. If the application will be for a dry fertilizer material, the machine selected from Step 1 above must be a dry fertilizer (granular) machine. If the application will be for a liquid material, the machine selected from Step 1 above must be a liquid applicator/sprayer.

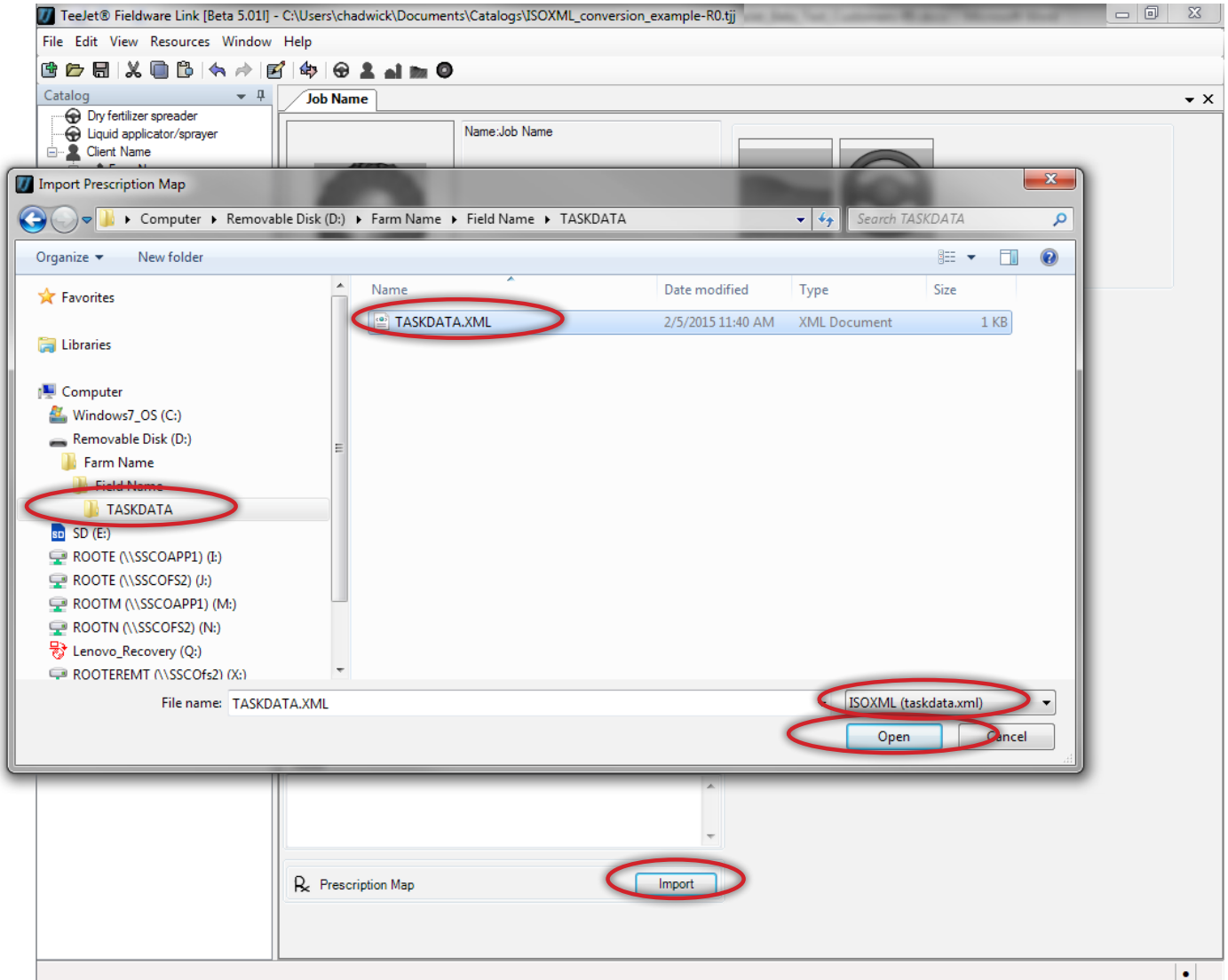


4. IMPORT THE ISOXML PRESCRIPTION FILE

Click on the 'Prescription Map' 'Import' button and navigate in Windows to the location where you have saved the ISOXML prescription files sent from your FMIS provider. Be sure to select 'ISOXML (taskdata.xml)' in the drop-down box to the right of the 'File name' selection box. The file you select will be named TASKDATA.XML.

Once selected, click on 'Open'.

NOTE: ISOXML files are commonly sent from the provider in a zipped file format. It is critical that you unzip (Extract) the zipped files before attempting to import them into Fieldware link. If you see the message 'The map you are attempting to open has no useable data' it is quite possibly because the files you are importing are still in a zipped format. Unzip (Extract) the files and try the import again.



5. VERIFY THAT THE ISOXML FILE IMPORTS CORRECTLY AND THAT THE RATES ARE AS EXPECTED

The imported map appearance will vary depending on how it was produced by your FMIS provider. Click on the tabs at the bottom of the map, and verify that the rates shown in the right side panel are as expected.

The screenshot shows the TeeJet Fieldware Link software interface. The main window displays a grid-based prescription map for a job named "Prescription Map: Job Name". The map shows various shaded regions representing different application rates. On the right side, there is a "Region Details" panel with the following information:

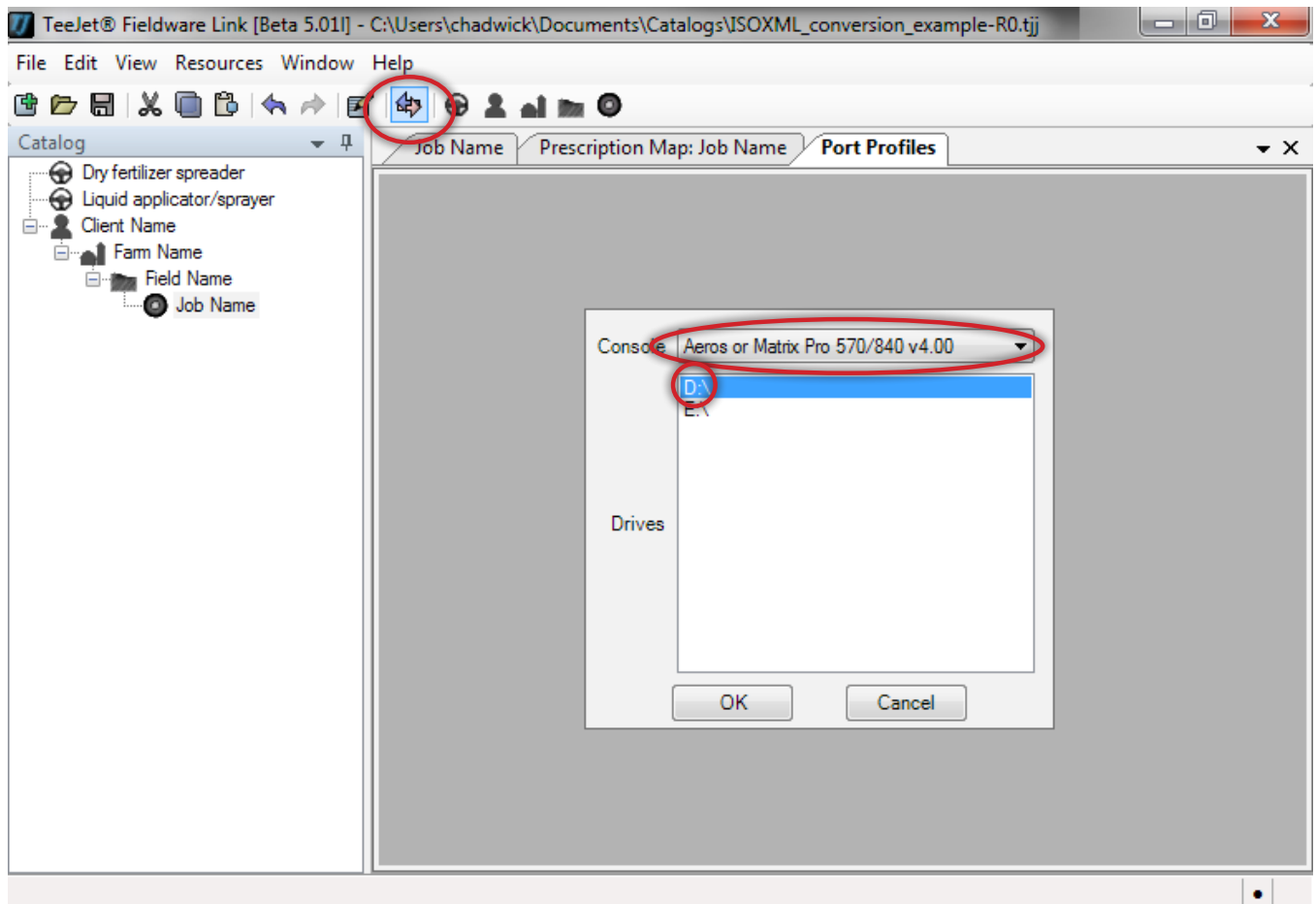
- Map Details:
 - Total Area: 21.16 ha
 - Region Count: 37
 - Total Product: 1,004.16 kg
 - Tank Requirement: Infinity
 - Refill Necessary: Yes
- Region Details:
 - Name: Precision app
 - Color: (Change button)
 - Area: 0.74 ha
 - Target Application Rate: 44.00 kg/ha (circled in red)
 - Total Product Applied: 32.38 kg
 - Delete Item button

At the bottom of the map, there is a status bar showing coordinates: 57°37'32.607"N 3°17'11.687"W. Below the map, there is a table of application rates for different regions, with the "Precision" column circled in red.

Default	Empty	Precision application	Precision application	Precision application	Precision application	Precision application	Precision application	Precision application	Precision application	Precision application	Precision application	Precision application	Precision application	Precision application
Precision	Precision	Precision	Precision	Precision	Precision	Precision	Precision	Precision	Precision	Precision	Precision	Precision	Precision	Precision

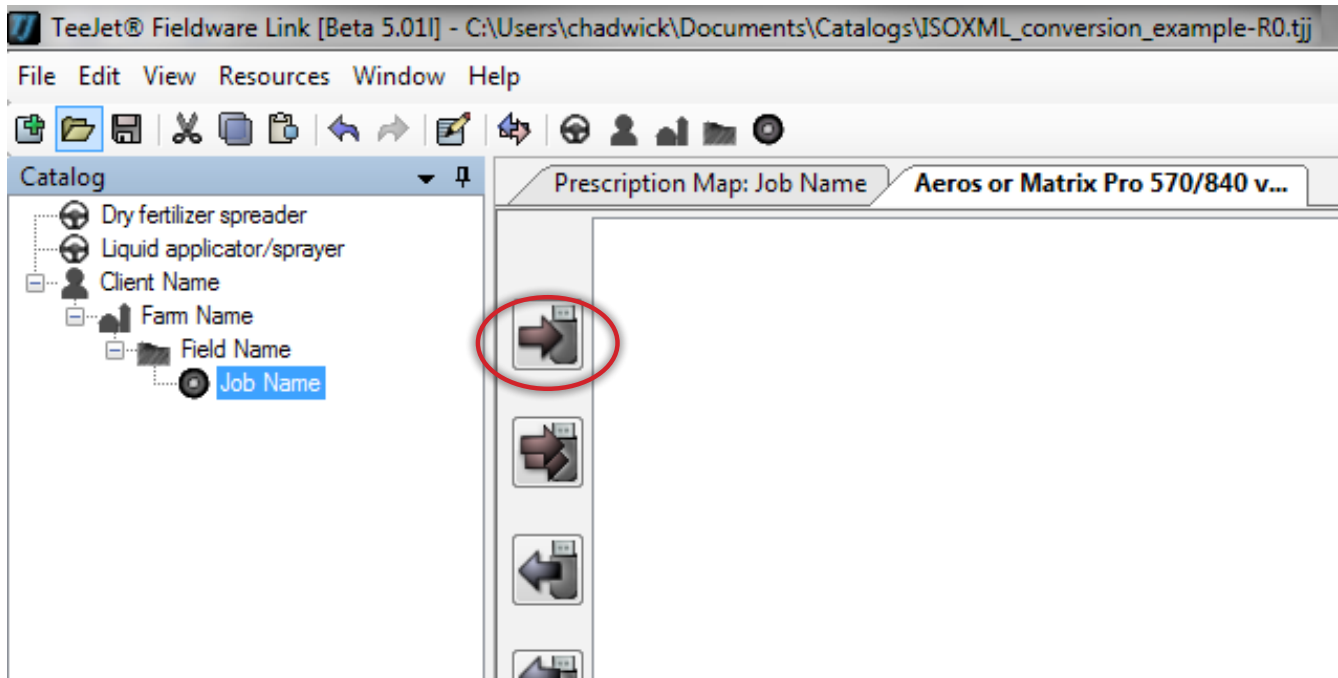
6. PREPARE TO EXPORT THE JOB TO A USB DRIVE

Click on the 'Port Profiles' to open the port window. Select the drive letter for the USB Drive (Thumb Drive) location on your computer that you want to port the job to. Be very sure to select 'Aeros or Matrix 570/840 v4.00' in the 'Console' drop-down box. Click OK.

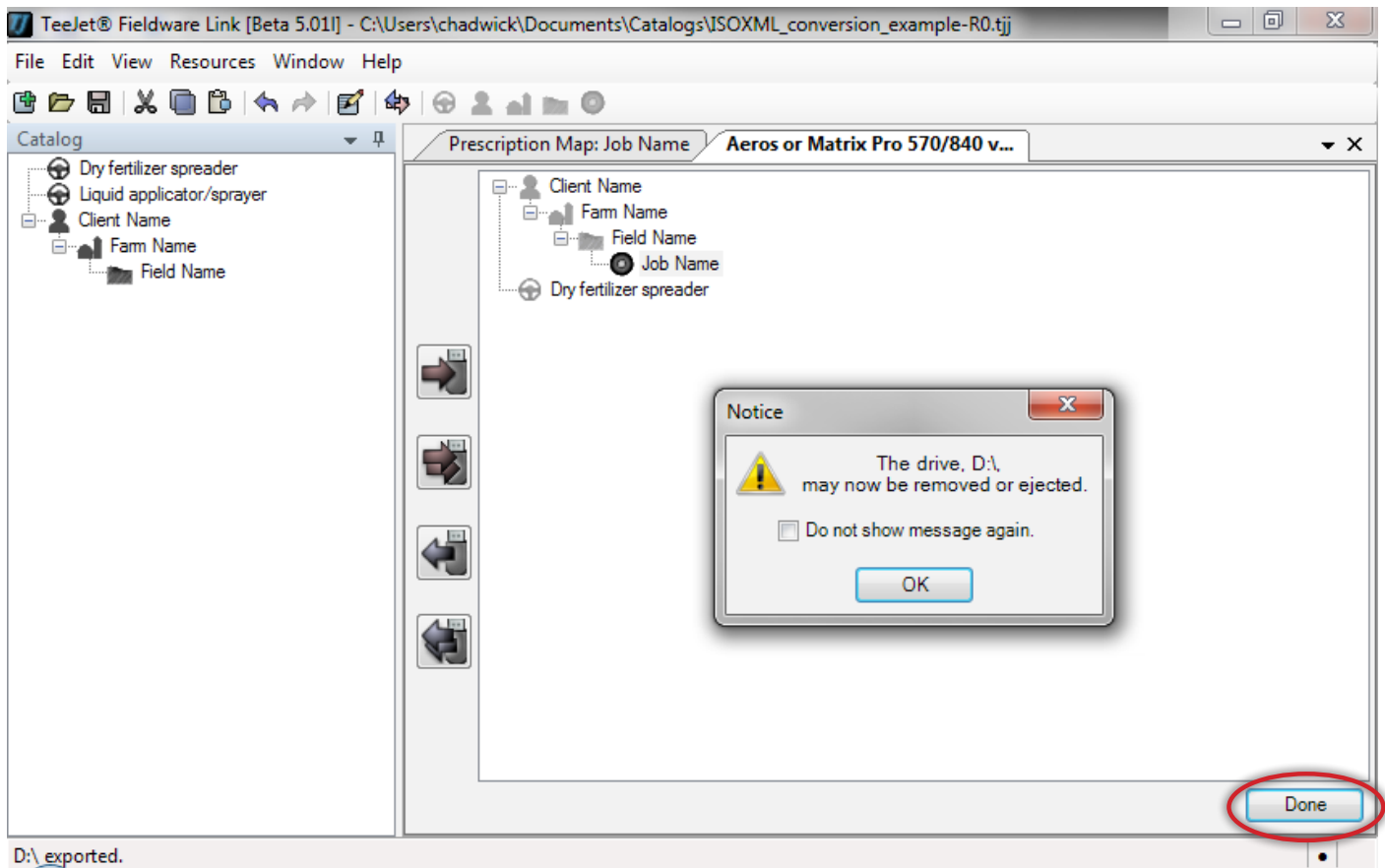


7. EXPORT JOB TO USB DRIVE

In the left pane select the job that you wish to export to the USB drive and click on the single right pointing brown arrow.



The job and appropriate Machine profile will now show in the right pane. Be very careful to click on the 'Done' button in the lower right corner of the right pane before removing the USB drive from the computer.



The following steps assume that the Matrix Pro GS already meets all the requirements listed at the start of this document, and that the GPS/GNSS and Implement configurations have already been set correctly for the application and implement being used.

8. IMPORT JOB INTO MATRIX PRO GS CONSOLE

Insert the USB Drive in the Matrix Pro GS console and navigate to Configuration->Data->Job Data->Transfer, and copy the job from 'USB Storage' to 'Internal Storage'

9. CONFIGURE MATRIX PRO GS FOR VRA (THIRD-PARTY RATE CONTROL)

Navigate to Configuration->Third-Party Rate Control, enable Third-Party Rate Control, and set each of the parameters as required for the controller. Your TeeJet contact may have to assist with this.

10. BEGIN APPLICATION

From the home page select the imported job from the 'Job' drop-down box, and begin the application.

