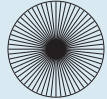


55270

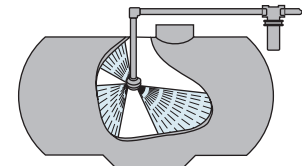
- Rotating head driven by the flow of the rinsing liquid through multiple round spray orifices.
- Solid stream sprays are precisely positioned to provide effective internal wetting and cleaning of tank surface.
- Removable retainer and rotating body allows for disassembly and cleaning.
- Provides 360° coverage of inside surface of tank for tank diameters up to 10 feet (3.0 m).
- Self-lubricating and self-flushing design.



NOZZLE NUMBER	CAPACITY - GPM					TYPE OF COVERAGE	SPRAY ANGLE
	10 PSI	20 PSI	30 PSI	40 PSI	50 PSI		
55270-1/2-11-POM	5.9	7.9	9.4	11.0	12.4		360°
B55270-1/2-11-POM							
55270-3/4-18-POM	9.0	12.7	15.6	18.0	20.0		
B55270-3/4-18-POM							

- Materials: Body – black POM (acetal); Fasteners – stainless steel.
- Recommended operating pressure 10–50 PSI (0.7–3.5 bar).
- Mounting connection – ½" or ¾" NPT or BSPT (F).

Typical Application



D41892

- The rotary tank rinsing nozzle is used for rinsing the insides of chemical containers and spray tanks up to 6.5' (2.0 m) in diameter.
- Available with ½" NPT or BSPT (F) connections.
- Significant lower rotating speed at approximately 15% of typical speed,



NOZZLE NUMBER	CAPACITY - GPM				
	20 PSI	30 PSI	40 PSI	50 PSI	60 PSI
D41892-(B)1/2-POM-6	4.0	4.9	5.7	6.4	7.0

- results in faster and more thorough cleaning of tank surface.
- Self-cleaning sliding bearing.
- Body and inserts are made of POM (Acetal).

- Nozzle fits in 1½" (37 mm) opening.
- Recommended operating pressure 30–60 PSI (2–4 bar) with a maximum pressure 115 PSI (8 bar).

TeeJet® Container Rinsing Nozzles

23240

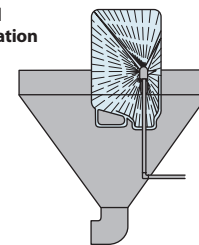
- The 23240 container rinsing nozzle is used to rinse residue from containers before disposal.
- Can be used for containers with 1½" (26 mm) diameter openings or larger.
- Three flat spray orifices provide self-rotational forces needed to create spherical coverage.
- Available in ½" NPT or BSPT (F) connections.



NOZZLE NUMBER	INLET PIPE CONNECTION	CAPACITY - GPM				
		20 PSI	30 PSI	40 PSI	50 PSI	60 PSI
(B)23240-3-316SS-5.7-316SS	½" (F)	4.0	4.9	5.7	6.4	7.0
(B)23240-3-316SS-7-316SS		4.9	6.1	7.0	7.8	8.6

- Made of 316 stainless steel. HSS bearings and races have been replaced with 316SS bearings and races. Also includes an internal sleeve made of Nylon.

Typical Application



VSM

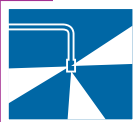
- Used for inside rinsing of chemical containers.
- 40 orifices combine to produce a 240° spray angle.
- All Nylon construction.
- Available with ½" or ¾" NPT or BSPT (F) connection.
- Recommended operating pressure 30–60 PSI (2–4 bar).



NOZZLE NUMBER	INLET PIPE CONNECTION	ORIFICE DIAMETER	CAPACITY - GPM						SPRAY ANGLE
			20 PSI	30 PSI	40 PSI	60 PSI	80 PSI	100 PSI	
(B) VSM-*-28	½" (F)	.031"	3.9	4.8	5.5	6.7	7.8	8.7	240°
(B) VSM-*-44		.039"	6.1	7.5	8.6	10.6	12.2	13.7	
(B) VSM-*-90	½" or ¾" (F)	.059"	12.5	15.3	17.7	22	25	28	
(B) VSM-*-140		.077"	19.4	24	27	34	39	43	
(B) VSM-*-190		.091"	26	32	37	46	53	59	

How to order:

(B) VSM – ¾ – 140
 | | | |
 BSPT Nozzle Type Size Capacity



TeeJet® Educator Nozzles

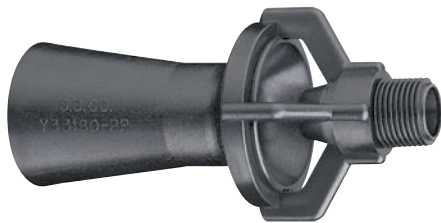
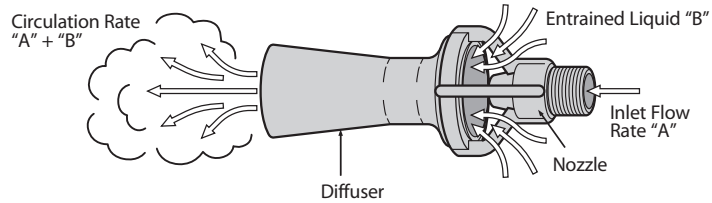
46550, Y33180 & Y9270

Features:

- Allows small pumps to circulate large volumes of liquid.
- Manufactured of glass-filled polypropylene for excellent corrosion and chemical resistance.
- Large flow opening minimizes plugging.
- Available in 1/4", 3/8", 3/4" or 1 1/2" (M) pipe thread inlet connection.

How to order:

Specify nozzle number.
Example: Y33180-PP



APPROXIMATE FLOW RATE PERFORMANCE	MODEL NUMBER	INLET LIQUID PRESSURE							
		10 PSI	15 PSI	20 PSI	25 PSI	30 PSI	35 PSI	40 PSI	50 PSI
Inlet Flow Rate "A" (GPM)	46550-1/4-PP	3.5	4.3	5.0	5.5	6.1	6.6	7.0	7.8
	Y33180-PP	9	11	12.7	14	16	17	18	20
	Y9270-PP	13.5	17	19	21	23	25	27	30
Entrained Liquid "B" (GPM)	46550-1-1/2-PP	33	40	47	53	58	63	66	75
	46550-1/4-PP	12.7	15.1	17.8	19.6	22	24	26	29
	Y33180-PP	36	44	50.8	56	64	68	72	80
Circulation Rate "A"+"B" (GPM)	Y9270-PP	54	68	76	84	92	100	108	120
	46550-1-1/2-PP	132	160	188	212	232	252	264	300
	46550-1/4-PP	16.2	19.4	22.8	25.1	28.1	30.6	33.0	36.8
Circulation Rate "A"+"B" (GPM)	Y33180-PP	45	55	63.5	70	80	85	90	100
	Y9270-PP	67.5	85	95	105	115	125	135	150
	46550-1-1/2-PP	165	200	235	265	290	315	330	375

MODEL NUMBER	PIPE THREAD INLET CONNECTION	ORIFICE DIAMETER	LENGTH	DIAMETER
46550-1/4-PP	1/4" (M)	3/16"	3"	1 1/4"
Y33180-PP	3/8" (M)	5/16"	4 1/8"	2 1/8"
Y9270-PP	3/4" (M)	3/8"	6 3/8"	2 9/32"
46550-1-1/2-PP	1 1/2" (M)	9/16"	10"	4 1/2"

TeeJet® Jet Agitators

Installed at bottom of spray tank on end of agitator return line. Continuous solid stream jet flow creates turbulence and keeps wettable powders in suspension.

6290-SC

Made in choice of brass, aluminum and all stainless steel. 1/4" NPT (F) inlet connection. Fits through 2" (51 mm) hole. Weight 6 oz. (0.17 kg). Siphon caps increase liquid flow by Venturi action to increase mixing potential.



JET AGITATOR NUMBER	ORIFICE CAP NUMBER	ORIFICE CAP INLET DIAMETER	CAPACITY (GPM) THRU AGITATOR LINE AT VARIOUS PRESSURES						FOR MAX. TANK SIZE IN GALLONS OF:
			10 PSI	15 PSI	20 PSI	30 PSI	40 PSI	50 PSI	
6290SC-1	11118-1	.055"	.78	.96	1.1	1.4	1.6	1.8	50
6290SC-2	11118-2	.086"	1.9	2.3	2.7	3.3	3.8	4.3	110
6290SC-3	11118-3	.096"	2.4	2.9	3.3	4.1	4.7	5.3	140
6290SC-5	11118-5	.144"	4.4	5.4	6.2	7.6	8.8	9.9	250
6290SC-8	11118-8	.156"	5.1	6.3	7.2	8.8	10.2	11.4	300
6290SC-10	11118-10	.177"	5.7	7.0	8.0	9.7	11.4	12.7	350

Note: Maximum tank sizes shown in table are approximate and are based on 40 PSI (3 bar) operation with pesticides, not fertilizers.

How to order:

Specify jet agitator number.

Examples:

- 6290SC-1 – Brass
- 6290SC-1-AL – Aluminum
- 6290SC-1-SS – Stainless Steel

Other sizes available.