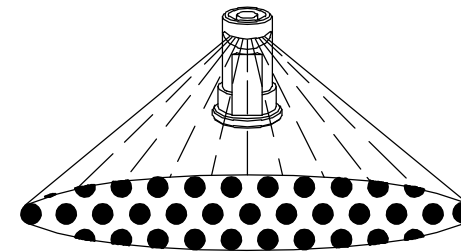
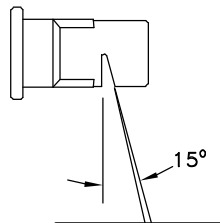
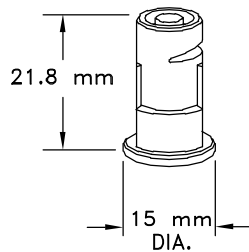


TKT TURBO **FloodJet**[®]
POLYMER
 WIDE ANGLE FLAT SPRAY TIPS
 WITH TAPERED EDGE PATTERN

U.S. PATENT NO. 4828182, 5190222, 5275340



WIDE ANGLE FLAT SPRAY WITH
 TAPERED EDGE PATTERN

TIP COLOR VisiFlo [®]	TIP No. (STRAINER MESH SIZE)	LIQUID PRESSURE IN BAR	CAPACITY 1 NOZZLE IN l/min	LITERS PER HECTARE 75 cm SPACING						LITERS PER HECTARE 100 cm SPACING					
				4 km/h	5 km/h	6 km/h	8 km/h	10 km/h	12 km/h	4 km/h	5 km/h	6 km/h	8 km/h	10 km/h	12 km/h
GRAY	TKT-VP3 (50 MESH)	1.0	1.37	274	219	183	137	110	91.3	206	164	137	103	82.2	68.5
		1.5	1.68	336	269	224	168	134	112	252	202	168	126	101	84.0
		2.0	1.94	388	310	259	194	155	129	291	233	194	146	116	97.0
		2.5	2.17	434	347	289	217	174	145	326	260	217	163	130	109
		3.0	2.37	474	379	316	237	190	158	356	284	237	178	142	119
L. BLUE	TKT-VP5	1.0	2.28	456	365	304	228	182	152	342	274	228	171	137	114
		1.5	2.79	558	446	372	279	223	186	419	335	279	209	167	140
		2.0	3.22	644	515	429	322	258	215	483	386	322	242	193	161
		2.5	3.60	720	576	480	360	288	240	540	432	360	270	216	180
		3.0	3.95	790	632	527	395	316	263	593	474	395	296	237	198

FEATURES:

- EXCELLENT SPRAY DISTRIBUTION QUALITY.
- WIDE SPRAY ANGLE AT LOW PRESSURE.
- IDEAL TIP FOR RESIDENTIAL AND ESTATE SPRAYERS.
- RECOMMENDED OPERATING PRESSURE RANGE: 0.7-3.0 bar.
- LARGE ORIFICE REDUCES CLOGGING.
- VisiFlo[®] COLOR-CODING FOR EASY SIZE IDENTIFICATION.
- ALL POLYMER CONSTRUCTION.
- EXCELLENT RESISTANCE TO CORROSIVE SOLUTIONS.
- CAN BE USED WITH No. CP25599--NY QUICK TEEJET CAP FOR AUTOMATIC ALIGNMENT.

Optimum Spray Height	
Nozzle Spacing	Spray Height
50 cm	60 cm
75 cm	75 cm
100 cm	100 cm

* WIDE ANGLE SPRAY NOZZLE HEIGHT IS INFLUENCED BY NOZZLE ORIENTATION. THE CRITICAL FACTOR IS TO ACHIEVE A DOUBLE SPRAY PATTERN OVERLAP.

DESCRIPTION:
 TKT TURBO FLOODJET
 WIDE ANGLE
 POLYMER SPRAY TIPS
 (METRIC)



Spraying Systems Co.[®]
 Spray Nozzles and Accessories
 P.O. Box 7900 - Wheaton, IL 60189-7900

Rev. No.

Data Sheet No.

46045M

Ref.

SHEET OF