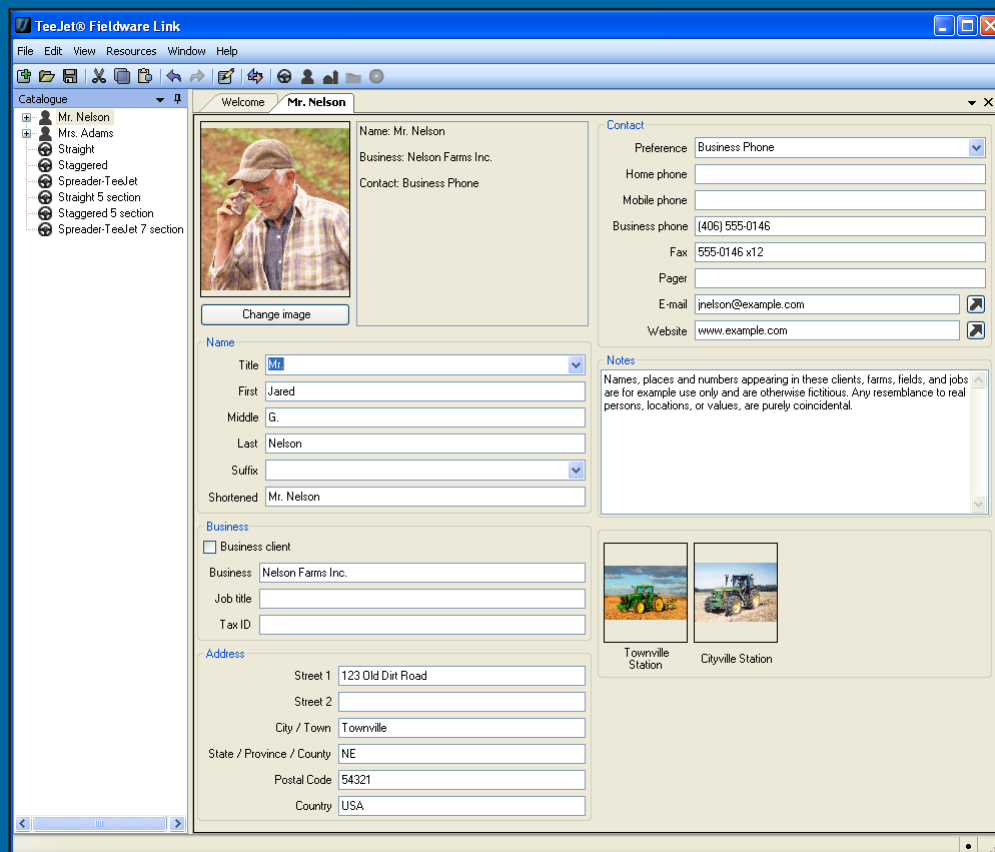


FIELDWARE® LINK

USER MANUAL

Software version 4.02

PC cataloguing programme user manual for
Matrix® Pro G v2.x and
Matrix® Pro GS v2.5x & v3.x software



MATRIX® PRO

MATRIX® PRO_{GS}

TeeJet®
TECHNOLOGIES

A Subsidiary of  Spraying Systems Co.®

FIELDWARE® LINK 4.02

Copyrights

© 2013 TeeJet Technologies. All rights reserved. No part of this document or the computer programmes described in it may be reproduced, copied, photocopied, translated, or reduced in any form or by any means, electronic or machine readable, recording or otherwise, without prior written consent from TeeJet Technologies.

Trademarks

Unless otherwise noted, all other brand or product names are trademarks or registered trademarks of their respective companies or organisations.

Limitation of liability

TEEJET TECHNOLOGIES PROVIDES THIS MATERIAL "AS IS" WITHOUT WARRANTY OF ANY KIND, EITHER EXPRESSED OR IMPLIED. NO COPYRIGHT LIABILITY OR PATENT IS ASSUMED. IN NO EVENT SHALL TEEJET TECHNOLOGIES BE LIABLE FOR ANY LOSS OF BUSINESS, LOSS OF PROFIT, LOSS OF USE OR DATA, INTERRUPTION OF BUSINESS, OR FOR INDIRECT, SPECIAL, INCIDENTAL, OR CONSEQUENTIAL DAMAGES OF ANY KIND, EVEN IF TEEJET TECHNOLOGIES HAS BEEN ADVISED OF SUCH DAMAGES ARISING FROM TEEJET TECHNOLOGIES SOFTWARE.

NOTE

Photos and illustrations may vary from the actual components provided. This may be due to different installation options, operation modes or production models.

TABLE OF CONTENTS

GETTING STARTED	1
REQUIREMENTS	1
Recommendations.....	1
DOWNLOADING FROM TEEJET.COM	1
INSTALLATION	1
Starting the programme.....	2
Setting the programme language.....	2
Welcome screen.....	2
Programme options.....	2
INTERFACE OVERVIEW	3
Menus.....	4
File menu.....	4
Edit menu.....	4
View menu.....	4
Resources menu.....	5
Window menu.....	5
Help menu.....	5
Toolbar.....	6
Catalogue tree view.....	6
Catalogue reorganisation.....	7
Screen organisation.....	7
PROGRAMME OPTIONS	9
MANAGING:	
MACHINE SETTINGS, CLIENTS, FARMS, FIELDS AND JOBS	10
ADDING, VIEWING, DELETING	10
Adding new machine settings, clients, farms, fields or jobs.....	10
Viewing machine settings, client, farm, field or job properties.....	11
Deleting a profile for machine settings, client, farm, field or job.....	11
PROFILE OVERVIEW	12
Machine settings.....	12
Implement type.....	12
Section numbers.....	12
ABSC disabled – Single section setup.....	13
Straight implement type.....	13
TeeJet spreader implement type.....	14
Staggered implement type.....	15
ABSC enabled – Smartcable or Section Driver Module setup.....	16

<i>Straight implement type</i>	16
<i>TeeJet spreader implement type</i>	17
<i>Staggered implement type</i>	19
Farm	21
Field	22
Job	24
Duplicating a job for reuse	25
IMPORTING/EXPORTING	26
Exporting profiles to the console	26
<i>Jobs with associated machine settings</i>	27
Importing/merging profiles from the console	27
Machine settings availability	29
CONVERTER	30
PRINT PREVIEW	31

GETTING STARTED

REQUIREMENTS

Some Microsoft Windows operating systems may require administrator rights to install this software.

Microsoft operating systems.....Windows XP Service Pack 3, Windows Vista or Windows 7

Hard drive space200 MB of free space

ProcessorIBM compatible x86 Pentium class processor, or newer, running at a minimum of 733 MHz

Memory.....1 GB of RAM

Peripheral devicesUSB 2.0 port

Peripheral software.....Microsoft .NET Framework 4 Client profile

Recommendations

- Matrix Pro (software version 2.0 or above is required) Some features will only be available with software version 3.0 and above
- Internet Access

DOWNLOADING FROM TEEJET.COM

Fieldware Link is available for download at www.teejet.com.

Fieldware Link 4.0 is a free programme and does not require license codes or registration.

Uninstallation of previous versions is not required when updating or reinstalling the software. It is recommended that all jobs be backed up before updating or reinstalling.

Please contact TeeJet Technologies with any questions or for assistance.

TeeJet Technologies is not responsible for damage due to improper download and installation.

INSTALLATION

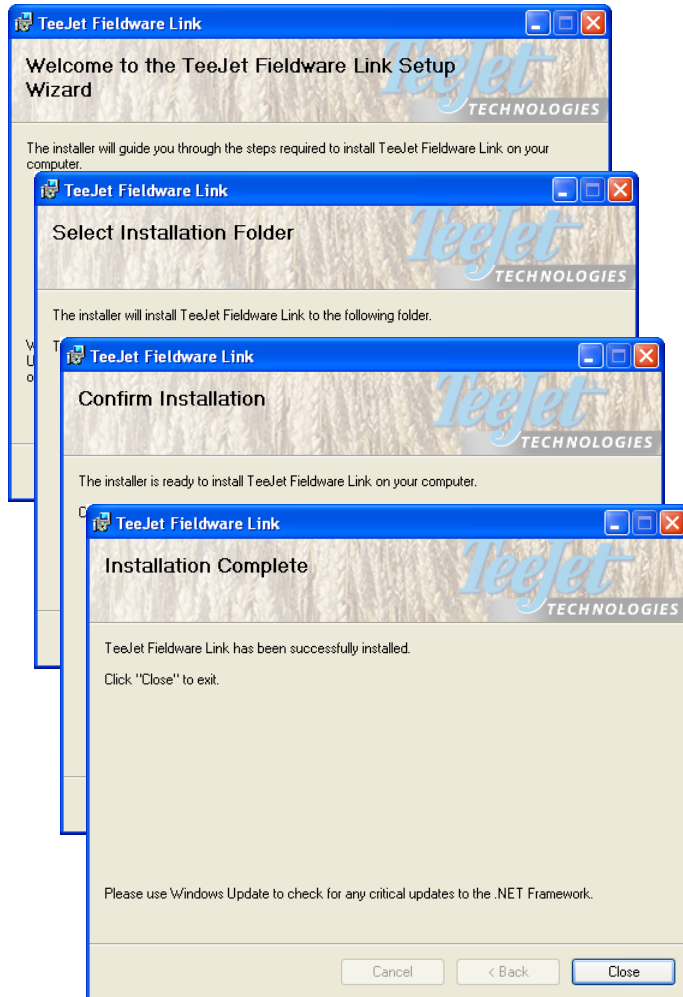
Once the installation programme has been downloaded:

1. Double-click the TEEJET FIELDWARE LINK icon .
2. Follow instructions on installation windows.

Figure 1: TeeJet Fieldware Link icon



Figure 2: Installation windows



NOTE: The operation language can be change after installation.

Starting the programme

To start Fieldware Link:


1. Double-click TEEJET FIELDWARE LINK icon  on the desktop.
OR
1. Select "All programmes / TeeJet / Fieldware Link / Fieldware Link" from the computer's Start menu.

Figure 3: Welcome screen

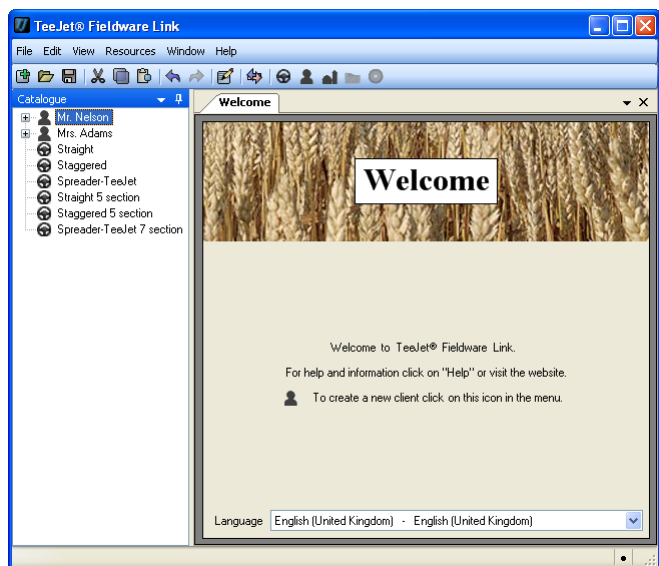


Figure 4: Welcome screen

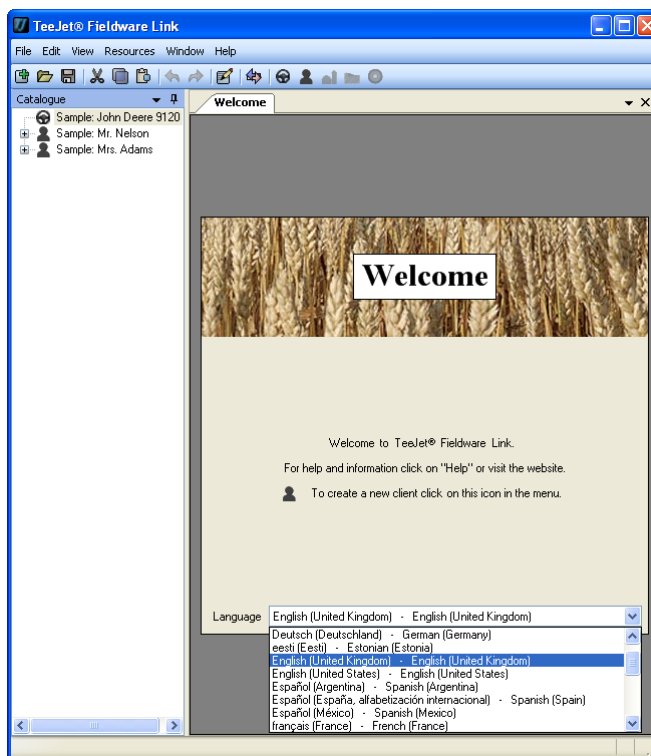
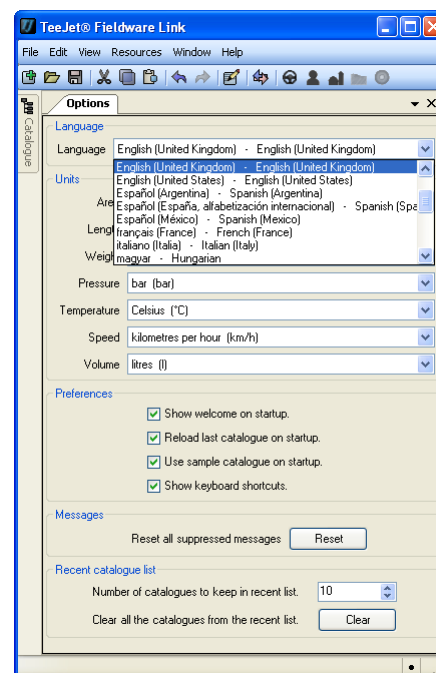



Figure 5: Programme options




Setting the programme language

The programme language can be changed from the Welcome screen or in the programme options.

Welcome screen

1. Click DOWN arrow  to show list of available languages
2. Select language.

Programme options

1. Open the View menu.
2. Click **Options**.
3. Click DOWN arrow  to show list of available languages
4. Select language.

INTERFACE OVERVIEW

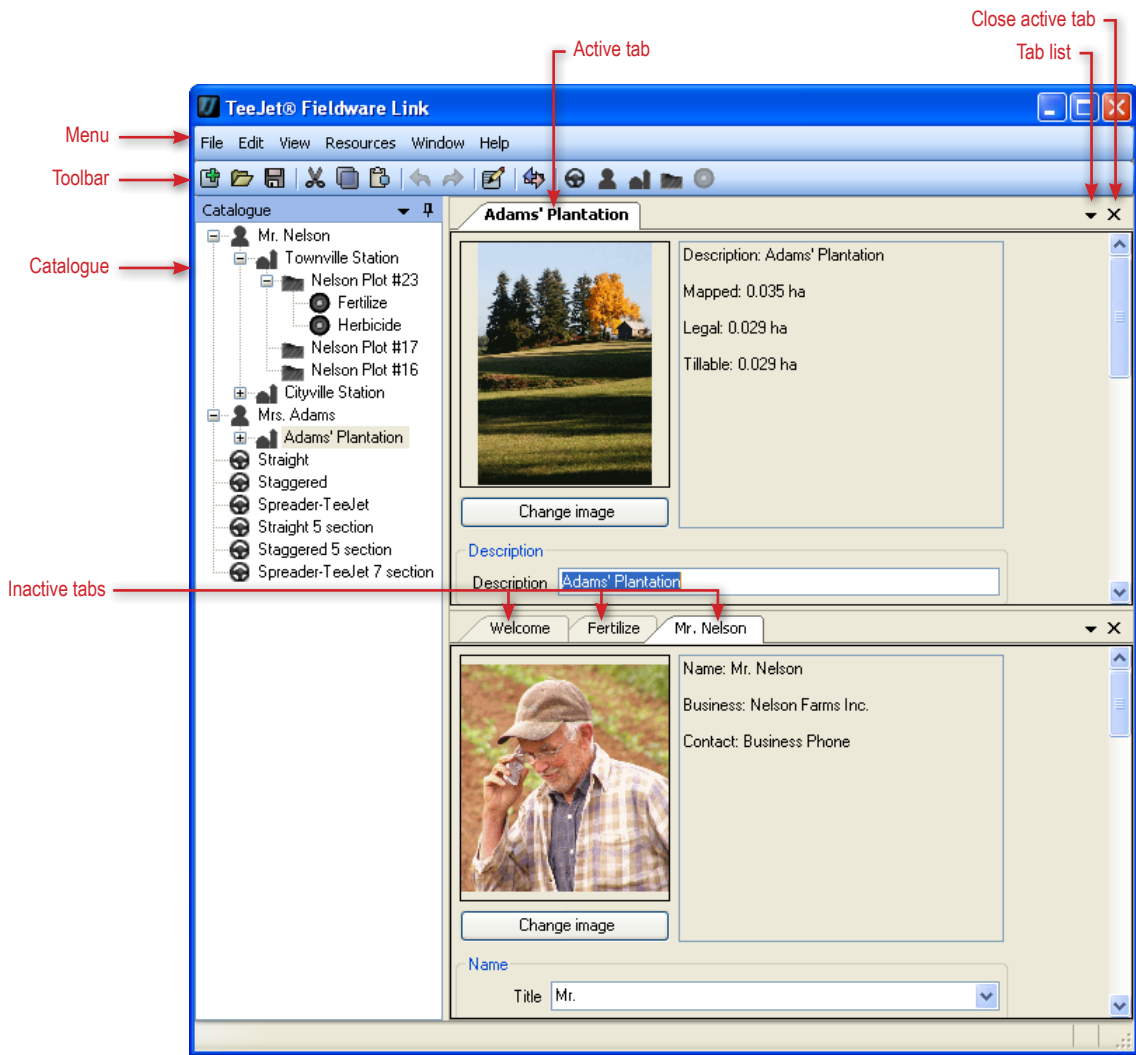
The menus allow you to have access to all functions. Most of the menu functions can be accomplished with a click of the toolbar or right-click on the catalogue.

The toolbar allows you to have one-click access to many common functions. Hover over any button to view button information. All toolbar button functionality can be duplicated in one of the drop down menus. Most can be duplicated in the catalogue tree view right-click options.

The catalogue tree view allows you to observe the organisation of machine settings, clients, farms, fields and jobs within the catalogue. Within a catalogue, you can add new machine settings, clients, farms, fields or jobs; and copy, delete and organise existing machine settings, clients, farms, fields or jobs. Most catalogue tree view functionality can be accessed in one of the drop down menus or on the toolbar.

Machine settings, clients, farms, fields and jobs are each given their own tab when opened. The screen can be organised to see multiple tabs at one time.

Figure 6: Interface overview



Menus

The menus allow you to have access to all functions.

Most of the menu functions can be accomplished with a click of the toolbar or right-click on the catalogue.

File menu

The file menu allows you to manage catalogues and print machine settings, clients, farms, fields or jobs.





NOTE: Jobs are created and loaded using the new client , farm , field  or job  buttons, menu options or catalogue right-click options.

Figure 7: File menu

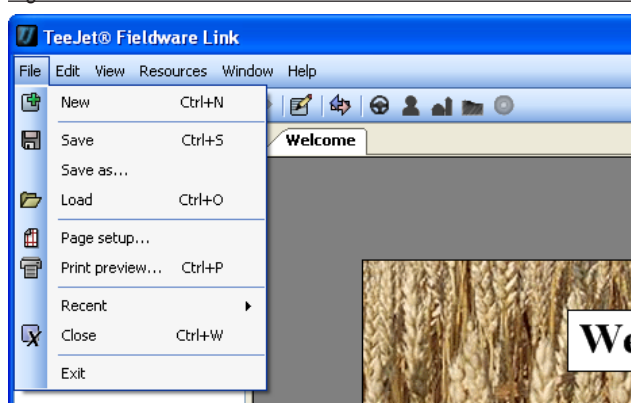








Table 1: File menu options

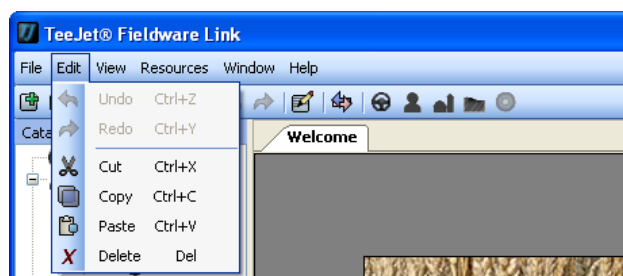
Option	Description
	New – creates a new empty catalogue
	Save/save as – saves the current open catalogue
	Load – opens an existing catalogue
	Print preview – provides a preview of a profile for machine settings, client, farm, field or job to be printed Also gives access to the print button
	Recent – provides a list of recent catalogues. Number of available catalogues can be set under View-->Options
	Close – closes the catalogue

Edit menu

The edit menu allows you to cut, copy, paste or delete text or catalogue machine settings, clients, farms, fields or jobs.

- ▶ To cut, copy, paste or delete a catalogue item, highlight the appropriate machine settings, client, farm, field or job on the Catalogue side bar.

Figure 8: Edit menu








View menu

The view menu allows you to access catalogue machine settings, clients, farms, fields or jobs' details, export/import jobs, search for information, convert units of measurement and access programme options.

Figure 9: View menu



Table 2: View menu options

Option	Description
	Properties – access catalogue machine settings, clients, farms, fields or jobs' details
	Import/export [port] jobs – export/import jobs and machine settings from/to Matrix Pro or Matrix Pro GS
	Find – search for information based on a word or phrase
	Converter – convert area, length, weight, pressure, temperature, speed or volume from one unit of measurement to another
	Options – access programme options including language, units, preferences and recent catalogue list quantities

Resources menu

The resources menu allows you to add a new profile for machine settings, client, farm, field or job to a catalogue.

- ▶ New farms, fields or jobs will be placed in the currently active client. Farms, fields and jobs can be organised using the catalogues tab.
- ▶ Machines cannot be placed under a client, farm, field or job. They can be associated to a job in the application section of a selected job.

Figure 10: Resources menu

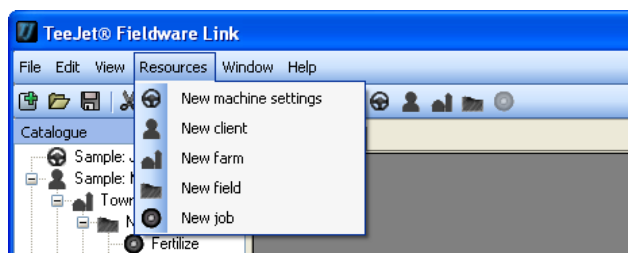







Table 3: Resources menu options

Option	Description
	New machine settings - creates a new machine settings profile
	New client – creates a new client profile
	New farm – creates a new farm profile under the selected client. If no client is selected, button will be greyed out.
	New field – creates a new field profile under the selected farm. If no farm is selected, button will be greyed out.
	New job – creates a new job profile under the selected field. If no field is selected, button will be greyed out.

Window menu

The window menu allows you to close and access tabs.

The active tab is highlighted in the window menu.

Figure 11: Window menu

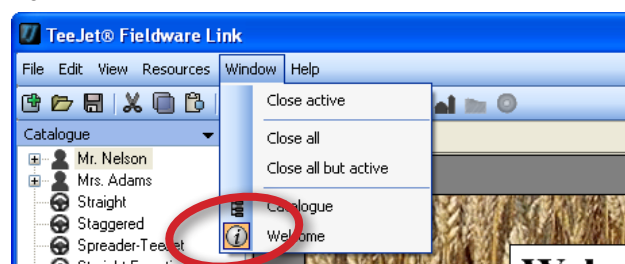


Table 4: Window menu options

Option	Description
	Close active – close only the active tab
	Close all – close all tabs
	Close all but active – close all tabs except for the active tab
Icon varies based on the open window	View and access all open tabs

Help menu

The help menu allows you to obtain help information, access www.teejet.com or Fieldware Link software information.

Figure 12: Help menu



Toolbar

The toolbar allows you to have one-click access to many common functions. Hover over any button to view button information.

All toolbar button functionality can also be accessed in one of the drop down menus. Most can be accessed in the catalogue tree view right-click options.

Figure 13: Toolbar

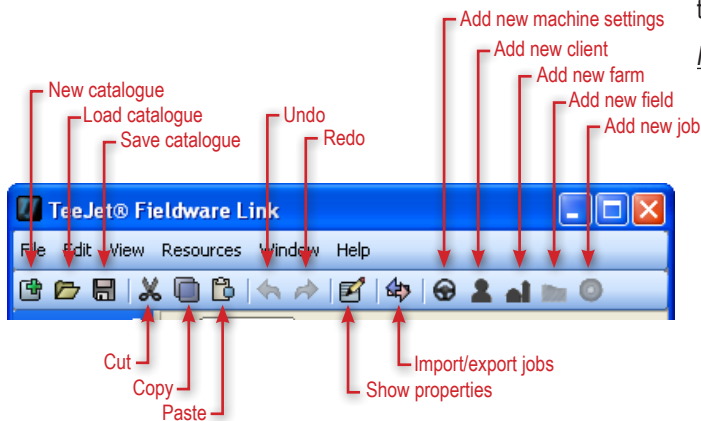


Table 5: Toolbar options

Button	Description
	New catalogue – creates a new empty catalogue
	Load catalogue – opens an existing catalogue
	Save catalogue – saves the current open catalogue
	Show properties – access catalogue machine settings, clients, farms, fields or job's details
	Import/export [port] jobs – export/import jobs and machine settings from/to Matrix Pro or Matrix Pro GS
	Add new machine settings - creates a new machine settings profile
	Add new client – creates a new client profile
	Add new farm – creates a new farm profile under the selected client. If no client is selected, button will be greyed out.
	Add new field – creates a new field profile under the selected farm. If no farm is selected, button will be greyed out.
	Add new job – creates a new job profile under the selected field. If no field is selected, button will be greyed out.

Catalogue tree view

The catalogue tree view allows you to observe the organisation of machine settings, clients, farms, fields and jobs within the catalogue. Within a catalogue you can add new machine settings, clients, farms, fields or jobs; and copy, delete and organise existing machine settings, clients, farms, fields or jobs.

Most catalogue tree view functionality can be accessed in one of the drop down menus or on the toolbar.

Figure 14: Catalogue tree view

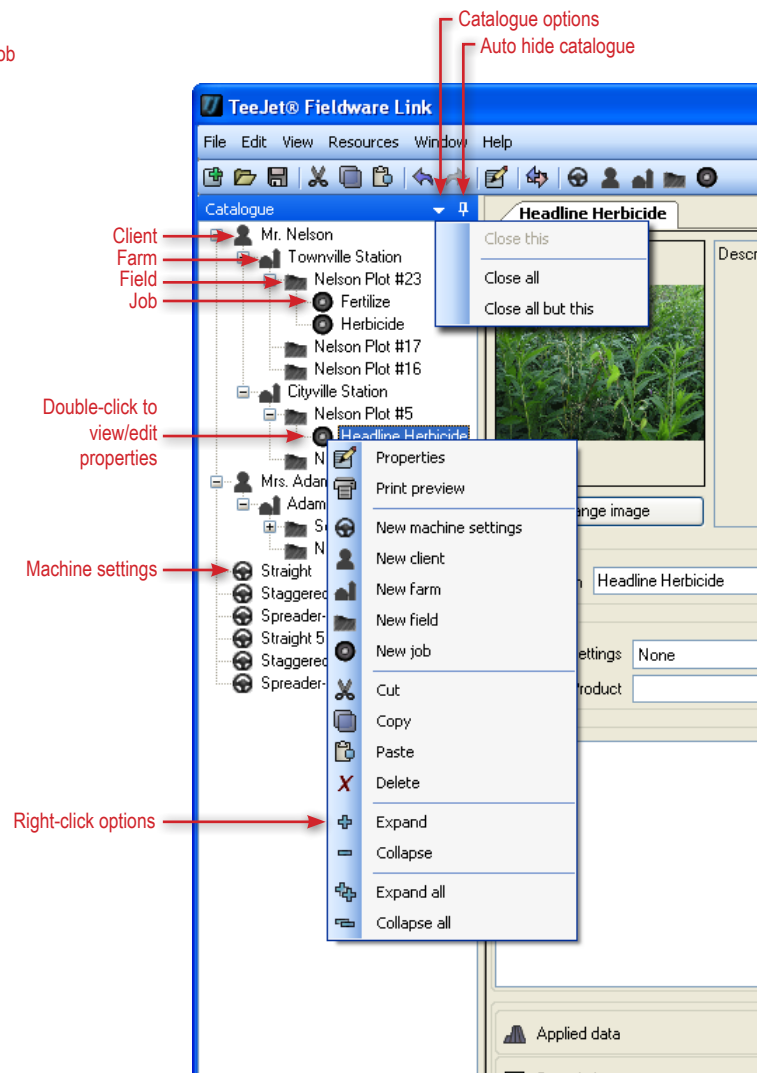




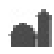

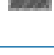


Table 6: Auto hide & Catalogue options

Option	Description
	Auto hide catalogue – automatically hide the catalogue window when not in use
	Catalogue options – access options for closing tabs

Table 7: Right-click options

Option	Description
	Properties – access catalogue machine settings, clients, farms, fields or job's details
	Print preview – provides a preview of a profile for machine settings, client, farm, field or job to be printed. Also gives access to the Print button
	New machine settings - creates a new machine settings profile
	New client – creates a new client profile
	New farm – creates a new farm profile under the selected client. If no client is selected, button will be greyed out.
	New field – creates a new field profile under the selected farm. If no farm is selected, button will be greyed out.
	New job – creates a new job profile under the selected field. If no field is selected, button will be greyed out.

Catalogue reorganisation

Reorganise farms, fields or jobs from one client, farm or field to another by:

- Click and drag a farm, field or job on the catalogue to a new location
 - Holding the “Ctrl” button on the keyboard while clicking and dragging will duplicate the farm, field or job.
- On the catalogue, highlight copy/cut a farm, field or job and paste it into a new location


NOTE: The client, farm, field or job will be added to the level highlighted on the catalogue, NOT the currently viewed tab.

Reorder clients and machine settings by clicking and dragging a client or machine on the catalogue to a new location.

Screen organisation

Screen organisation allows you to see multiple tabs at one time.

To divide the screen:

1. Click and hold on tab to be moved.
2. Drag the tab and release it on the portion of the DIVIDER icon  to where the tab is to be moved.

The space being moved to will be highlighted.

Figure 15: Divide the screen

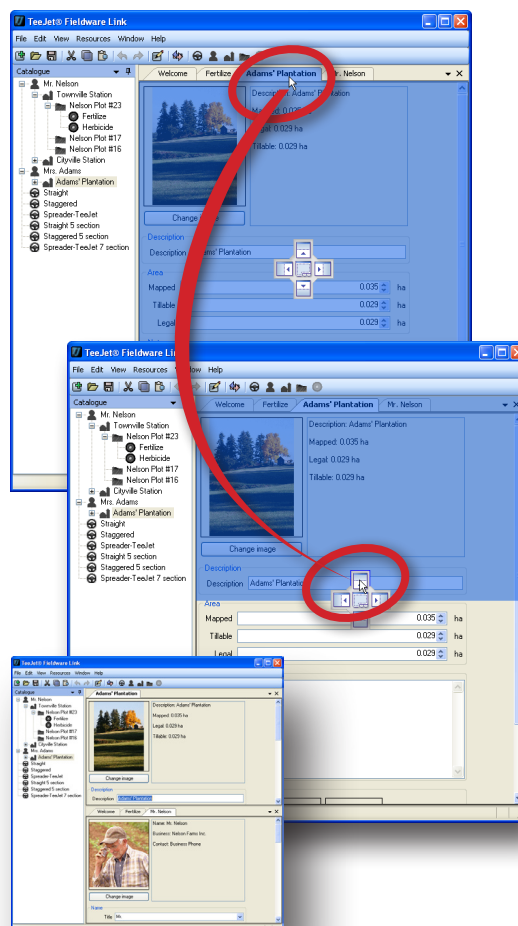


Figure 16: Divide the screen

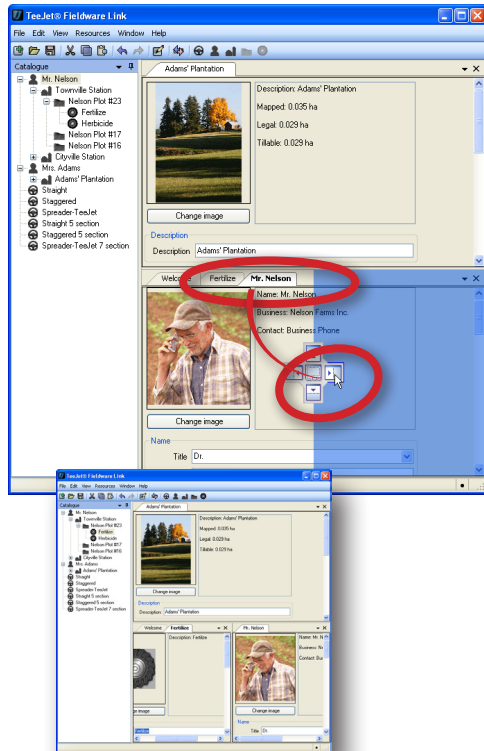
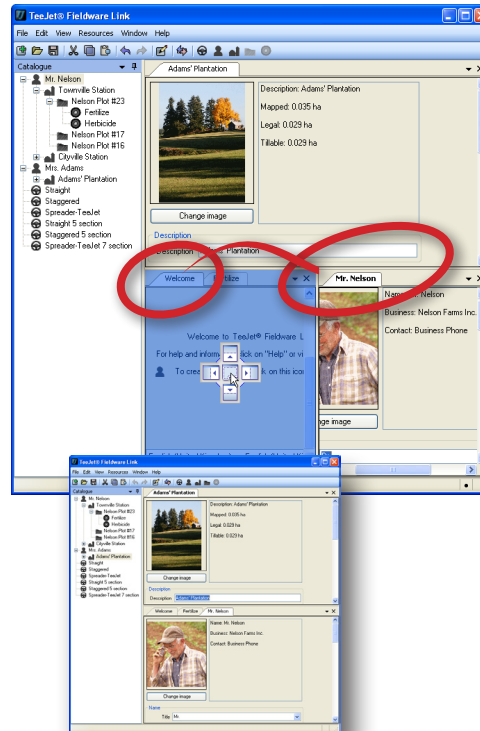



Figure 18: Combine tabs into one screen section

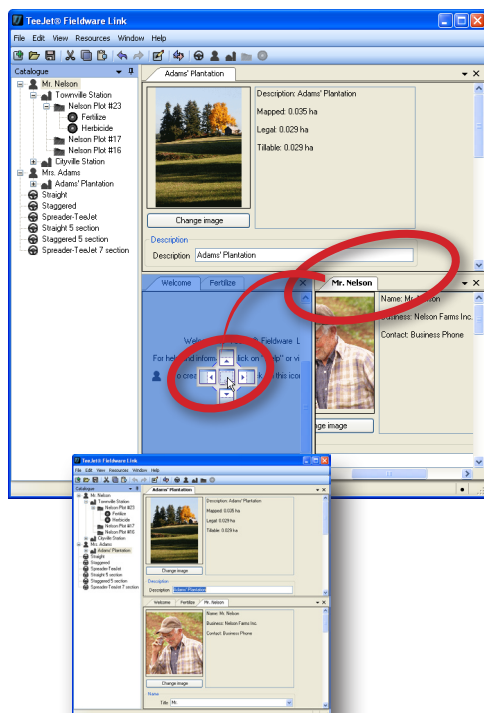


To combine tabs into one screen section:

1. Click and hold on tab to be moved.
2. Drag the tab and release it
 - ▶ On the centre of the DIVIDER icon 
 - ▶ On the tab header.

The screen section being combined will be highlighted.

Figure 17: Combine tabs into one screen section



PROGRAMME OPTIONS

Programme options is used to establish language, units, preferences, messages and recent catalogue list.

To adjust programme options:

1. Open the View menu.
2. Click **Options**.
3. Select from:
 - ▶ Language – used to define the programme language.
* The languages included in the programme may be changed at any time.
 - ▶ Units – used to define the programme measurements.
Options include area, length, weight, pressure, temperature, speed and volume.
 - ▶ Preferences – used to define startup options
 - ▶ Messages – used to reset all suppressed messages.
Suppressed messages are those which have been marked as, “Do not show again.”
 - ▶ Recent catalogue list – used to establish the number of catalogues listed in the recent catalogue list as well as clear all catalogues from the recent catalogue list

Figure 19: Select options

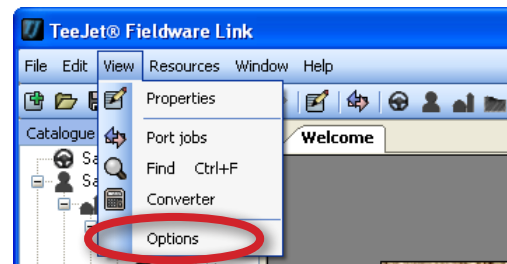
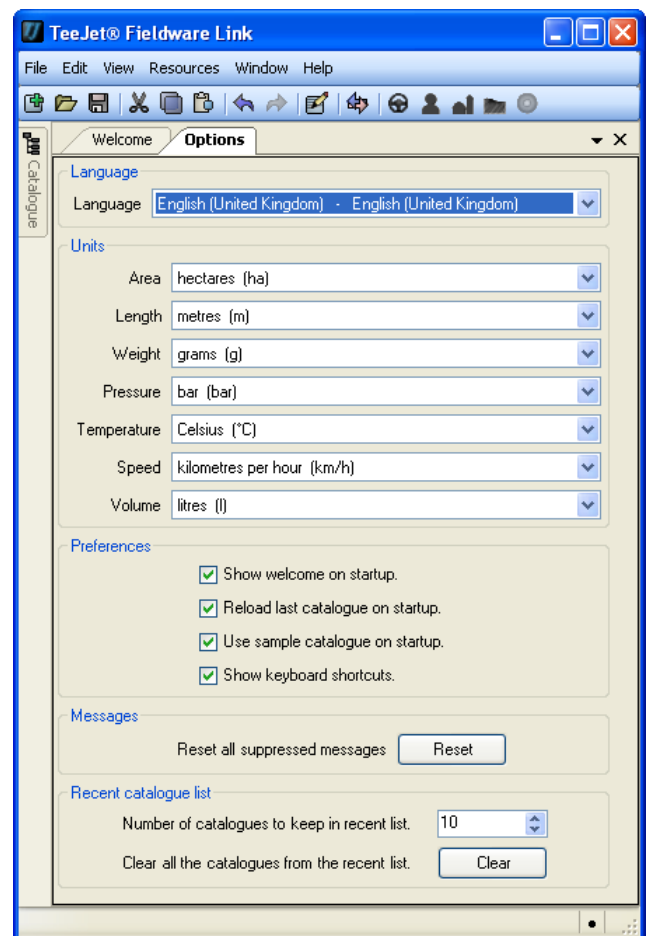


Figure 20: Options tab




MANAGING: MACHINE SETTINGS, CLIENTS, FARMS, FIELDS AND JOBS


ADDING, VIEWING, DELETING

Adding new machine settings, clients, farms, fields or jobs


To add machine settings to the catalogue:

1. Click ADD NEW MACHINE SETTINGS  toolbar option, menu option or catalogue right-click option


To add clients to the catalogue:

1. Click ADD NEW CLIENT  toolbar option, menu option or catalogue right-click option.


To add farms to the catalogue:

1. On the catalogue, highlight the client to which the farm is to be added.
2. Click ADD NEW FARM  toolbar option, menu option or catalogue right-click option.

To add fields to the catalogue:

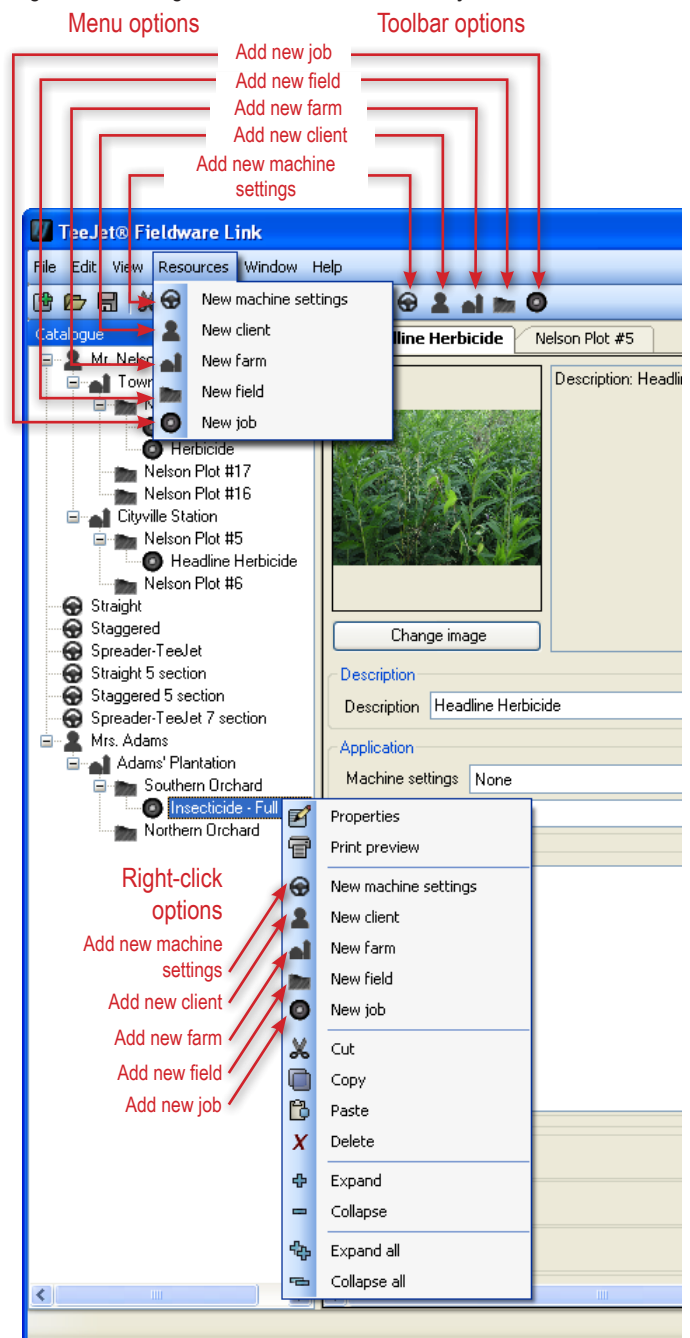
1. On the catalogue, highlight the farm to which the field is to be added.
2. Click ADD NEW FIELD  toolbar option, menu option or catalogue right-click option.

To add jobs to the catalogue:

1. On the catalogue, highlight the field to which the job is to be added.
2. Click ADD NEW JOB  toolbar option, menu option or catalogue right-click option.

NOTE: The new client, farm, field or job will be added to the level highlighted on the catalogue, NOT the currently viewed tab.

Figure 21: Adding new clients, farms, fields or jobs




Viewing machine settings, client, farm, field or job properties

To view a profile for machine settings, client, farm, field or job:

1. On the catalogue, double-click the machine settings, client, farm, field or job.

OR

1. On the catalogue, highlight the machine settings, client, farm, field or job.
2. Click PROPERTIES  toolbar option, menu option or catalogue right-click option.

From the properties tab you can edit the machine settings, client, farm, field or job information. If an element of a catalogue has been edited and not saved, a black dot will appear in the lower right-hand corner of the window.

Figure 22: Viewing machine settings, client, farm, field or job properties

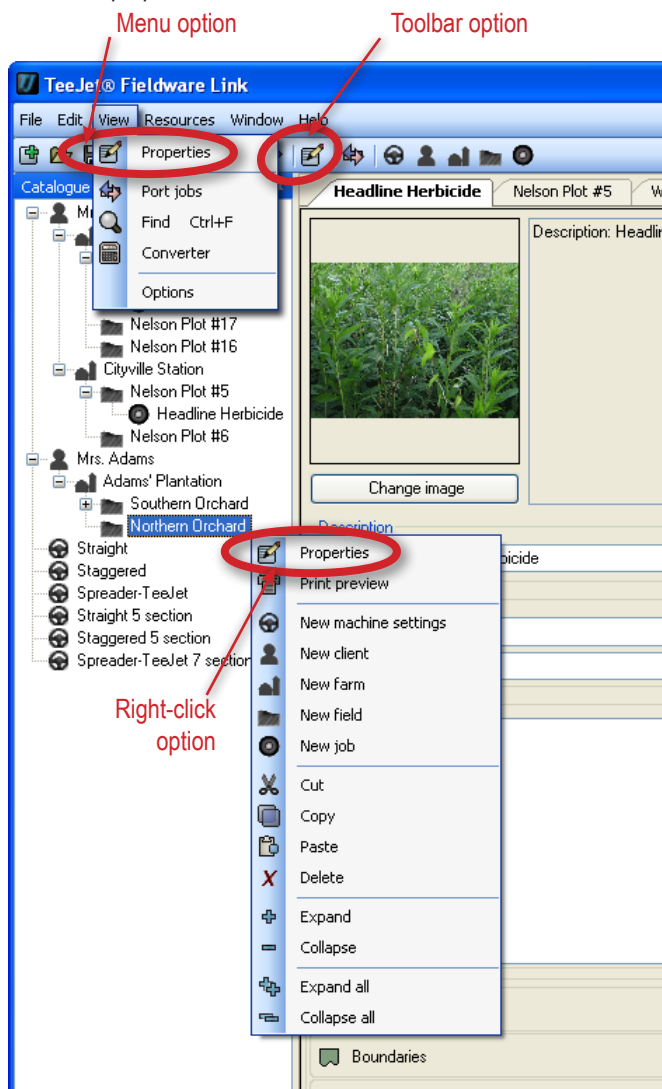
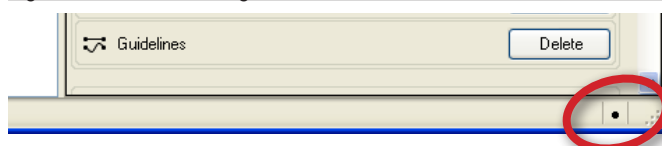



Figure 23: Edited catalogue mark



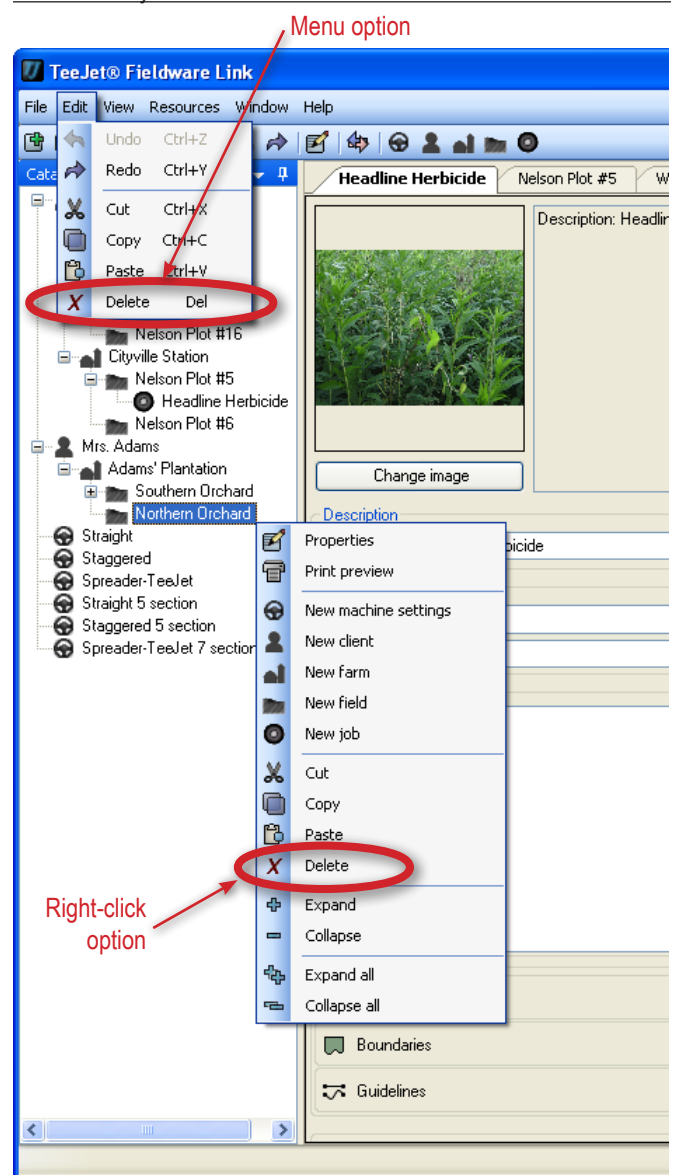
Deleting a profile for machine settings, client, farm, field or job

To delete a profile for machine settings, client, farm, field or job:

1. On the catalogue, highlight the machine settings, client, farm, field or job.
2. Select from:
 - ▶ Click DELETE  menu option or catalogue right click option.
 - ▶ Press the Delete key on your keyboard

NOTE: When deleting a client, farm or field, all sub-elements of these [farms, fields or jobs] will also be deleted.



Figure 24: Deleting a profile for machine settings, client, farm, field or job







PROFILE OVERVIEW

Machine settings

A machine settings profile gives access to details about the vehicle and implement including:

- Image
- Basic properties
 - Each of these entries can be imported from machine settings from the Matrix Pro GS v3.xx console, user defined or user edited. Highlight and type over existing information, use the UP/DOWN arrows  or click the DOWN arrow  to make changes.
 - Changes to Implement type and ABSC enabled will vary the available basic properties, Implement dynamics and Job specific defaults.

NOTE: Changing the description of a machine settings profile does not change how a particular machine settings profile is recognized by your Matrix Pro or Matrix Pro GS console. If you are attempting to create a new machine settings profile, please create a copy or use the appropriate new machine settings profile option.

- Implement dynamics
 - Each of these entries can be imported from machine settings from the Matrix Pro GS v3.xx console, user defined or user edited. Highlight and type over existing information, use the UP/DOWN arrows  or click the DOWN arrow  to make changes.
 - Changes to Setup type will vary the available Implement dynamics.
- Job specific defaults
 - Each of these entries can be imported from machine settings from the Matrix Pro GS v3.xx console, user defined or user edited. Highlight and type over existing information, use the UP/DOWN arrows  or click the DOWN arrow  to make changes.

NOTE: Machine settings are only supported in Matrix Pro v3.xx. An error will occur when trying to export machine settings to the Matrix Pro v2.xx format.

Implement type

Implement type selects the type of application pattern that most closely represents your system.

- In straight mode – the boom sections have no length and are on a line a fixed distance from antenna
- In spreader mode – a virtual line is created in line with the delivery disks from which the application section or sections can vary in length and can be at different distances from the line
- In staggered mode – a virtual line is created in line with section 1 from which the application section or sections have no length and can be at different distances from antenna

Section numbers

Sections are numbered from left to right while facing in the machine's forward direction.

Figure 25: Implement type - straight

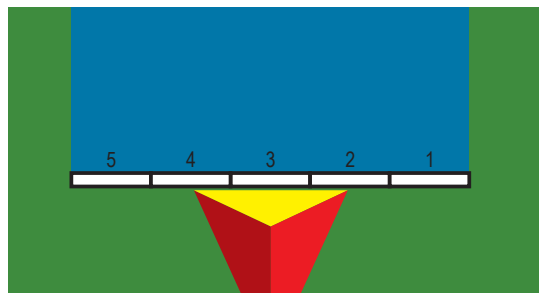


Figure 26: Implement type - spreader

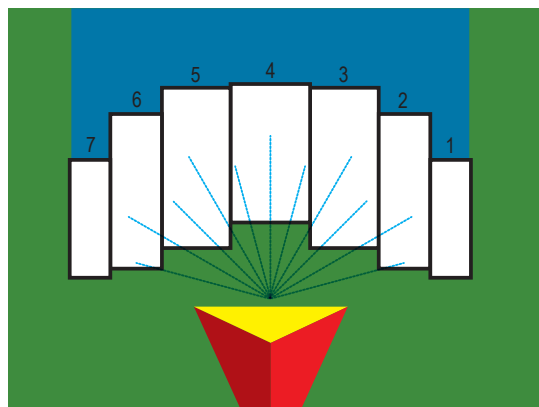
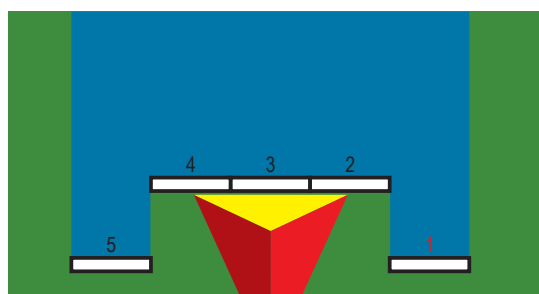


Figure 27: Implement type - staggered



ABSC disabled – Single section setup

ABSC disabled or single section setup is used when a Smartcable or Section Driver Module (SDM) is not on the system. The entire boom or delivery area is considered to be one section.

NOTE: If a Smartcable or Section Driver Module (SDM) is present, refer to “Smartcable or Section Driver Module setup” to view setup steps.

Straight implement type

Basic properties

- ▶ Description – used to enter the name of the machine settings profile.
- ▶ GPS antenna height – used to measure the height of the antenna from the ground. Range is 0.0 to 10.0 metres.
- ▶ Guidance width – used to enter the distance between the guidelines. Range is 1.0 to 75.0 metres.
- ▶ Implement type – used to select **Straight** as the layout of the sections for the applied product location.
- ▶ Implement offset direction **5** – direction from the centreline of the machine to the centre of the implement while facing in the machine’s forward direction
- ▶ Implement offset distance **5** – used to enter the distance from the centreline of the machine to the centre of the implement. Range is 0 to 10.0 metres.
- ▶ Boom offset direction – used to select whether the boom is located in front of or behind the GPS antenna as the vehicle moves in a forward direction
- ▶ Antenna to boom distance **1** – used to enter the distance from the GPS antenna to the boom. Range is 0.0 to 50.0 metres.
- ▶ Number of implement sections – used to select the number of implement sections. When ABSC Enabled is unchecked, number of implement sections is set to one implement section and is unavailable for editing.
- ▶ Tank capacity – used to enter the capacity of the tank
- ▶ ABSC enabled – used to enable/disable ABSC (automatic boom section control) options
 - Unchecked – single section setup options will be available
 - Checked – Smartcable or SDM setup options will be available (see “ABSC enabled – Smartcable or Section Driver Module setup” section for details)

Implement dynamics

- ▶ Section width (under Spray width in Matrix Pro v2.xx or Matrix Pro GS v2.xx, or under Application width in Matrix Pro GS v3.xx) – used to enter the total width of the implement.

Job specific defaults

There are no available options.

Figure 28: Basic properties

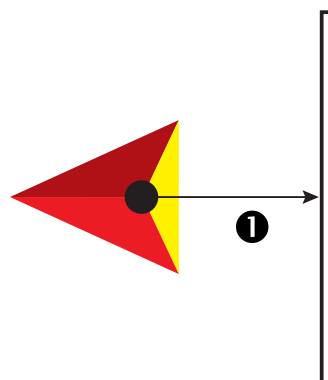


Figure 29: Implement offset distance and direction

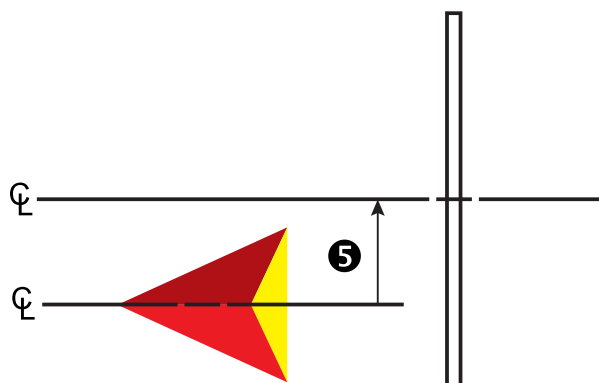
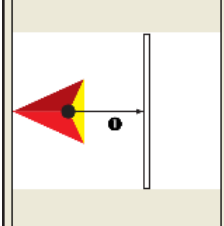


Figure 30: Machine settings – Straight implement type



Change image

Description: Straight

Implement type: Straight

Number of implement sections: 1

Application/working width (m): 20.00

Basic properties

Description:

GPS antenna height: m

Guidance width: m

Implement type:

ImplementOffsetDirection:

Implement Offset Distance: m

Boom offset direction:

Antenna to boom distance: m

Number of implement sections:

Tank capacity: l

ABSC enabled

Implement dynamics

Section width (m)

1

Job specific defaults

TeeJet spreader implement type

NOTE: Loading a spreader implement type onto a console that has not had the spreader ABSC feature unlocked is not permitted.

Basic properties

- ▶ Description – used to enter the name of the machine settings profile.
- ▶ GPS antenna height – used to measure the height of the antenna from the ground. Range is 0.0 to 10.0 metres.
- ▶ Guidance width – used to enter the distance between the guidelines. Range is 1.0 to 75.0 metres.
- ▶ Implement type – used to select **Spreader** as the layout of the sections for the applied product location.
- ▶ Implement offset direction **5** – direction from the centreline of the machine to the centre of the implement while facing in the machine's forward direction
- ▶ Implement offset distance **5** – used to enter the distance from the centreline of the machine to the centre of the implement. Range is 0 to 10.0 metres.
- ▶ Antenna to disks distance **1** – used to enter the distance from the GPS antenna to the delivery disks or dispersal mechanism. Range is 0.0 to 50.0 metres.
- ▶ Number of implement sections – used to select the number of implement sections. When ABSC Enabled is unchecked, number of implement sections is set to one implement section and is unavailable for editing.
- ▶ Tank capacity – used to enter the capacity of the tank
- ▶ ABSC enabled – used to enable ABSC (automatic boom section control) options
 - Unchecked – single section setup options will be available
 - Checked – Smartcable or SDM setup options will be available (see “ABSC enabled – Smartcable or Section Driver Module setup” section for details)

Implement dynamics

- ▶ Setup type – used to select **TeeJet** spreader type
- ▶ Spread offset distance **2** – used to enter the offset distance from the disks, or dispersal mechanism, to where product initially hits the ground. Range is 0.0 to 75.0 metres.
- ▶ Section width (under Working width in Matrix Pro GS v3.xx) – used to enter the total width of the implement.
- ▶ Spread length **3** – used to enter the length of application for the section. Range is 0.0 to 75.0 metres.

Job specific defaults

There are no available options.

Figure 31: Basic properties

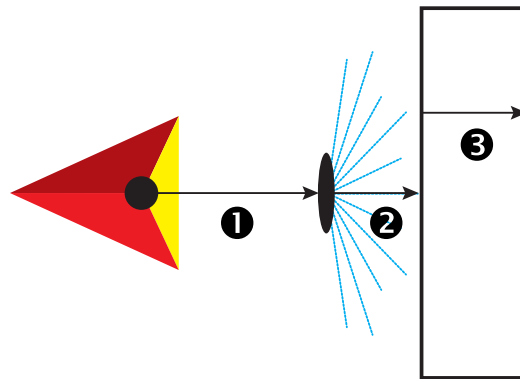


Figure 32: Implement offset distance and direction

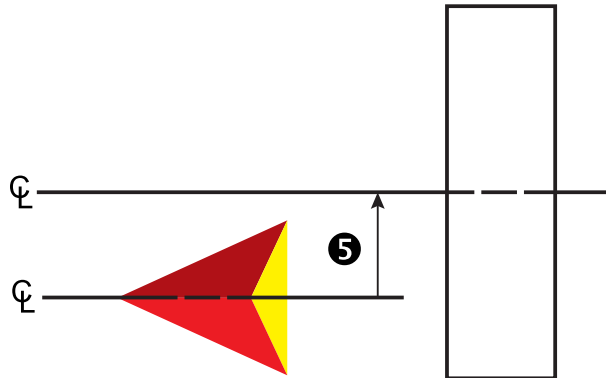
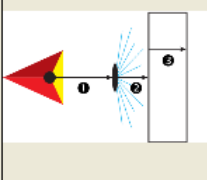


Figure 33: Machine settings – TeeJet spreader implement type



Change image

Description: Spreader-TeeJet

Implement type: Spreader

Number of implement sections: 1

Application/working width (m): 20.00

Basic properties

Description:

GPS antenna height: m

Guidance width: m

Implement type:

ImplementOffsetDirection:

Implement Offset Distance: m

Antenna to disks distance: m

Number of implement sections:

Tank capacity: l

ABSC enabled

Implement dynamics

Setup type:

Spread offset distance: m

	Section width (m)	Lengths (m)
1	<input type="text" value="20.00"/>	<input type="text" value="2.00"/>

Job specific defaults

Staggered implement type

NOTE: This profile type will be loaded on to the console as "Straight".

Basic properties

- ▶ Description – used to enter the name of the machine settings profile.
- ▶ GPS antenna height – used to measure the height of the antenna from the ground. Range is 0.0 to 10.0 metres.
- ▶ Guidance width – used to enter the distance between the guidelines. Range is 1.0 to 75.0 metres.
- ▶ Implement type – used to select **Staggered** as the layout of the sections for the applied product location.
- ▶ Implement offset direction **5** – direction from the centreline of the machine to the centre of the implement while facing in the machine's forward direction
- ▶ Implement offset distance **5** – used to enter the distance from the centreline of the machine to the centre of the implement. Range is 0 to 10.0 metres.
- ▶ Section 1 offset direction – used to select whether section 1 is located in front of or behind the GPS antenna as the vehicle moves in a forward direction
- ▶ Antenna to section 1 distance **1** – used to enter the distance from the GPS antenna to the section 1. Range is 0.0 to 50.0 metres.
- ▶ Number of implement sections – used to select the number of implement sections. When ABSC Enabled is unchecked, number of implement sections is set to one implement section and is unavailable for editing.
- ▶ Tank capacity – used to enter the capacity of the tank
 - Unchecked – single section setup options will be available
 - Checked – Smartcable or SDM setup options will be available (see "ABSC enabled – Smartcable or Section Driver Module setup" section for details)

Implement dynamics

- ▶ Section width (under Spray width in Matrix Pro v2.xx or Matrix Pro GS v2.xx, or under Application width in Matrix Pro GS v3.xx) – used to enter the total width of the implement.

Job specific defaults

There are no available options.

Figure 34: Basic properties

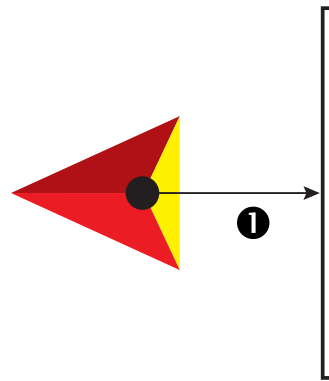


Figure 35: Implement offset distance and direction

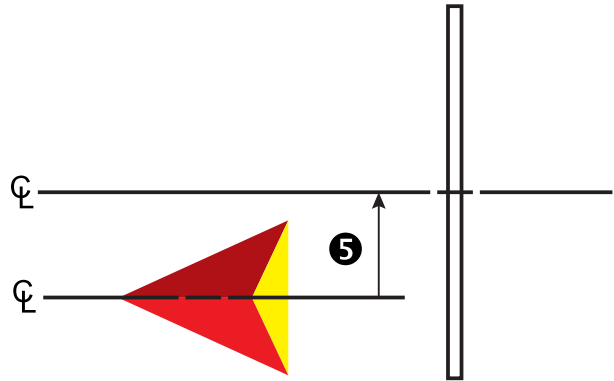
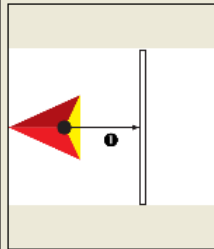


Figure 36: Machine settings – Staggered implement type

		Description: Staggered Implement type: Staggered Number of implement sections: 1 Application/working width (m): 20.00
<input type="button" value="Change image"/>		
Basic properties		
Description	Staggered	
GPS antenna height	1.50	m
Guidance width	20.00	m
Implement type	Staggered	
ImplementOffsetDirection	Right	
Implement Offset Distance	0.00	m
Section 1 Offset Direction	Forward	
Antenna to Section 1 Distance	3.00	m
Number of implement sections	1	
Tank capacity	0.00	l
<input type="checkbox"/> ABSC enabled		
Implement dynamics		
Section width (m)		
1	20.00	
Job specific defaults		

ABSC enabled – Smartcable or Section Driver Module setup

Smartcable or Section Driver Module setup is used when a Smartcable or Section Driver Module (SDM) is on the system. The boom or delivery area can be entered as up to 15 sections. Each section can vary in width and in spreader mode, can vary in length. Additional options available with a SDM include application overlap, application delay and staggered mode.

NOTE: If a Smartcable or Section Driver Module (SDM) is not present, refer to “Single section setup” to view setup steps.

Straight implement type

NOTE: When loading this profile type onto a console without a Smartcable or SDM on the system, only values for Section 1 will be used. All other section or ABSC information will be retained in the background as unused parts of the profile.

Basic properties

- ▶ Description – used to enter the name of the machine settings profile.
- ▶ GPS antenna height – used to measure the height of the antenna from the ground. Range is 0.0 to 10.0 metres.
- ▶ Guidance width – used to enter the distance between the guidelines. Range is 1.0 to 75.0 metres.
- ▶ Implement type – used to select **Straight** as the layout of the sections for the applied product location.
- ▶ Implement offset direction **5** – direction from the centreline of the machine to the centre of the implement while facing in the machine’s forward direction
- ▶ Implement offset distance **5** – used to enter the distance from the centreline of the machine to the centre of the implement. Range is 0 to 10.0 metres.
- ▶ Boom offset direction – used to select whether the boom is located in front of or behind the GPS antenna as the vehicle moves in a forward direction
- ▶ Antenna to boom distance **1** – used to enter the distance from the GPS antenna to the boom. Range is 0.0 to 50.0 metres.
- ▶ Number of implement sections – used to select the number of implement sections. When ABSC Enabled is checked, Smartcable and SDM options are available for editing.
- ▶ Tank capacity – used to enter the capacity of the tank
- ▶ ABSC enabled – used to enable ABSC (automatic boom section control) options
 - Unchecked – single section setup options will be available (see “ABSC enabled – Single Section Setup” section for details)
 - Checked – Smartcable or SDM setup options will be available

Implement dynamics

- ▶ Delay on time – used to set the time when each section will switch on when entering an area that has not been applied. If the application turns on too soon when entering an unapplied area, decrease the delay on time. If the application turns on too late, increase the delay on time. Range is 0 to 10 seconds.
- ▶ Delay off time – used to set the time when each section will switch off when entering an area that has been applied. If the application turns off too soon when entering an applied area, decrease the delay off time. If the application turns off too late, increase the delay off time. Range is 0 to 10 seconds.
- ▶ Section width (under Spray width in Matrix Pro v2.xx or Matrix Pro GS v2.xx, or under Application width in Matrix Pro GS v3.xx) – used to enter the width of each section of the implement. Each section can be a different width. Sections are numbered from left to right while facing in the machine’s forward direction. Range for each section is 0.0 to 75.0 metres. Total for all sections must be greater than 1.0 metres.

Job specific defaults

- ▶ Overlap – used to select the amount of overlap allowed when the sections are turned on and off while using automatic boom section control

Figure 37: Basic properties

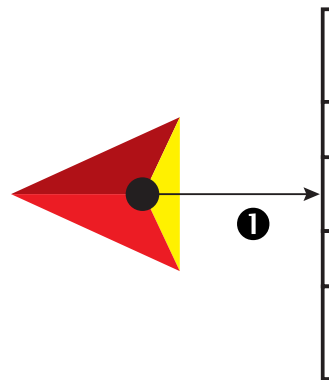


Figure 38: Implement offset distance and direction

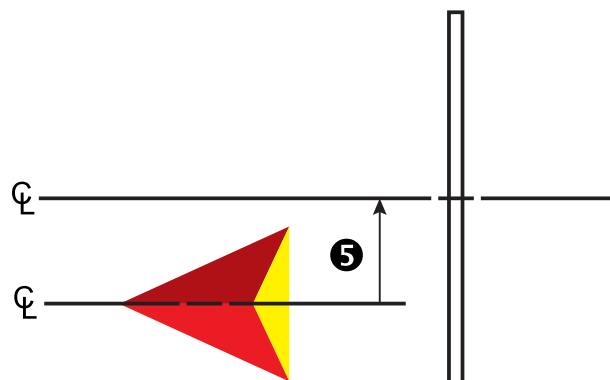


Figure 39: Machine settings – Straight implement type

Description: Straight 5 section
Implement type: Straight
Number of implement sections: 5
Application/working width (m): 20.00

Change image

Basic properties

Description: Straight 5 section

GPS antenna height: 1.50 m

Guidance width: 20.00 m

Implement type: Straight

ImplementOffsetDirection: Right

Implement Offset Distance: 0.00 m

Boom offset direction: Backward

Antenna to boom distance: 3.00 m

Number of implement sections: 5

Tank capacity: 0.00 l

ABSC enabled

Implement dynamics

Delay on time: 1.00 sec

Delay off time: 1.00 sec

Section width (m)

1	4.50
2	4.00
3	3.00
4	4.00
5	4.50

Job specific defaults

Overlap: 50%

TeeJet spreader implement type

NOTE: When loading this profile onto a console without a Smartcable or SDM on the system, only values for Section 1 will be used. All other section or ABSC information will be retained in the background as unused parts of the profile.

Loading a spreader implement type onto a console that has not had the spreader ABSC feature unlocked is not permitted.

The machine settings for multiple-section spreader applications are machine dependent. Please consult with the spreader manufacturer, and not TeeJet, for these machine specific settings.

Basic properties

- ▶ Description – used to enter the name of the machine settings profile.
- ▶ GPS antenna height – used to measure the height of the antenna from the ground. Range is 0.0 to 10.0 metres.
- ▶ Guidance width – used to enter the distance between the guidelines. Range is 1.0 to 75.0 metres.
- ▶ Implement type – used to select **Spreader** as the layout of the sections for the applied product location.
- ▶ Implement offset direction **5** – direction from the centreline of the machine to the centre of the implement while facing in the machine's forward direction
- ▶ Implement offset distance **5** – used to enter the distance from the centreline of the machine to the centre of the implement. Range is 0 to 10.0 metres.
- ▶ Antenna to disks distance **1** – used to enter the distance from the GPS antenna to the delivery disks or dispersal mechanism. Range is 0.0 to 50.0 metres.
- ▶ Number of implement sections – used to select the number of implement sections. When ABSC Enabled is checked, Smartcable and SDM options are available for editing.
- ▶ Tank capacity – used to enter the capacity of the tank
- ▶ ABSC enabled – used to enable ABSC (automatic boom section control) options
 - Unchecked – single section setup options will be available (see “ABSC enabled – Single Section Setup” section for details)
 - Checked – Smartcable or SDM setup options will be available

Implement dynamics

- ▶ Setup type – used to select **TeeJet** spreader type
- ▶ Delay on time – used to set the time when each section will switch on when entering an area that has not been applied. If the application turns on too soon when entering an unapplied area, decrease the delay on time. If the application turns on too late, increase the delay on time. Range is 0 to 10 seconds.
- ▶ Delay off time – used to set the time when each section will switch off when entering an area that has been applied. If the application turns off too soon when entering an applied area, decrease the delay off time. If the application turns off too late, increase the delay off time. Range is 0 to 10 seconds.
- ▶ Spread offset distance **2** – used to enter the offset distance from the disks, or dispersal mechanism, to where product initially hits the ground on section 1. Range is 0.0 to 75.0 metres.

- ▶ Section width (under Working width in Matrix Pro GS v3.xx) – used to enter the width of each section of the implement. Each section can be a different width. Sections are numbered from left to right while facing in the machine's forward direction. Range for each section is 0.0 to 75.0 metres. Total for all sections must be greater than 1.0 metres.
- ▶ Spread length ④ – used to enter the length of the application section for each section. Each section can be a different length. Sections are numbered from left to right while facing in the machine's forward direction. Range is 0.0 to 75.0 metres.
- ▶ Section offsets ② – used to enter the offset distance from the leading edge of Section 1 (the spread offset line) to the leading edge of each section. Section 1 is always 0.0 metres. All other sections can be a different distances. Sections are numbered from left to right while facing in the machine's forward direction. Range is 0.0 to 75.0 metres.

Job specific defaults

- ▶ Overlap – used to select the amount of overlap allowed when the sections are turned on and off while using automatic boom section control

Figure 40: Basic properties

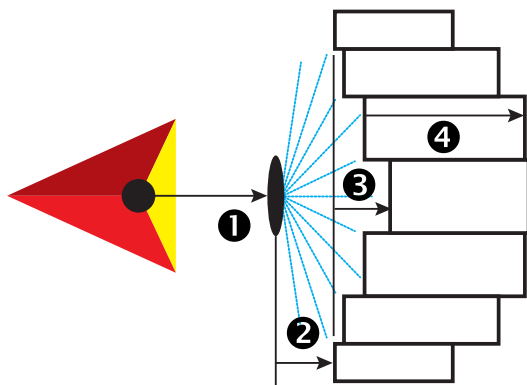


Figure 41: Implement offset distance and direction

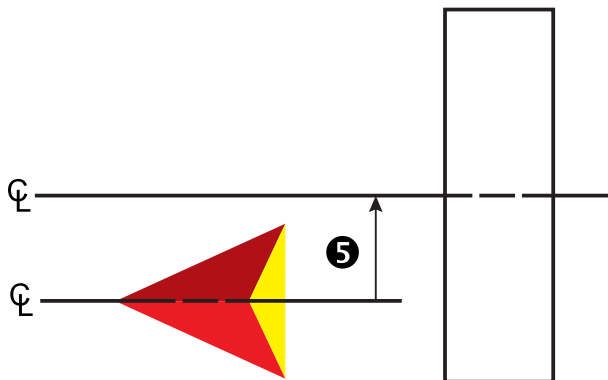
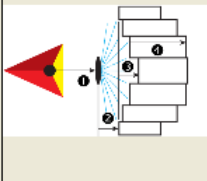


Figure 42: Machine settings – TeeJet spreader implement type



Change image

Description: Spreader-TeeJet 7 section

Implement type: Spreader

Number of implement sections: 7

Application/working width (m): 20.00

Basic properties

Description:

GPS antenna height: m

Guidance width: m

Implement type:

ImplementOffsetDirection:

Implement Offset Distance: m

Antenna to disks distance: m

Number of implement sections:

Tank capacity: l

ABSC enabled

Implement dynamics

Setup type:

Delay on time: sec

Delay off time: sec

Spread offset distance: m

	Section width (m)	Lengths (m)	Section offsets (m)
1	<input type="text" value="2.00"/>	<input type="text" value="1.50"/>	<input type="text" value="0.00"/>
2	<input type="text" value="2.50"/>	<input type="text" value="2.20"/>	<input type="text" value="0.40"/>
3	<input type="text" value="3.50"/>	<input type="text" value="2.40"/>	<input type="text" value="0.90"/>
4	<input type="text" value="4.00"/>	<input type="text" value="2.00"/>	<input type="text" value="1.50"/>
5	<input type="text" value="3.50"/>	<input type="text" value="2.40"/>	<input type="text" value="0.90"/>
6	<input type="text" value="2.50"/>	<input type="text" value="2.20"/>	<input type="text" value="0.40"/>
7	<input type="text" value="2.00"/>	<input type="text" value="1.80"/>	<input type="text" value="0.00"/>

Job specific defaults

Overlap:

Staggered implement type

NOTE: When loading this profile type onto a console without a Smartcable or SDM on the system, only values for Section 1 will be used and the implement type will be set to "straight". All other section or ABSC information will be retained in the background as unused parts of the profile.

Basic properties

- ▶ Description – used to enter the name of the machine settings profile.
- ▶ GPS antenna height – used to measure the height of the antenna from the ground. Range is 0.0 to 10.0 metres.
- ▶ Guidance width – used to enter the distance between the guidelines. Range is 1.0 to 75.0 metres.
- ▶ Implement type – used to select **Staggered** as the layout of the sections for the applied product location.
- ▶ Implement offset direction **5** – direction from the centreline of the machine to the centre of the implement while facing in the machine's forward direction
- ▶ Implement offset distance **5** – used to enter the distance from the centreline of the machine to the centre of the implement. Range is 0 to 10.0 metres.
- ▶ Section 1 offset direction – used to select whether section 1 is located in front of or behind the GPS antenna as the vehicle moves in a forward direction
- ▶ Antenna to section 1 distance **1** – used to enter the distance from the GPS antenna to the section 1. Range is 0.0 to 50.0 metres.
- ▶ Number of implement sections – used to select the number of implement sections. When ABSC Enabled is checked, Smartcable and SDM options are available for editing.
- ▶ Tank capacity – used to enter the capacity of the tank
- ▶ ABSC enabled – used to enable ABSC (automatic boom section control) options
 - Unchecked – single section setup options will be available (see "ABSC enabled – Single Section Setup" section for details)
 - Checked – Smartcable or SDM setup options will be available

Implement dynamics

- ▶ Delay on time – used to set the time when each section will switch on when entering an area that has not been applied. If the application turns on too soon when entering an unapplied area, decrease the delay on time. If the application turns on too late, increase the delay on time. Range is 0 to 10 seconds.
- ▶ Delay off time – used to set the time when each section will switch off when entering an area that has been applied. If the application turns off too soon when entering an applied area, decrease the delay off time. If the application turns off too late, increase the delay off time. Range is 0 to 10 seconds.

- ▶ Section width (under Application width in Matrix Pro GS v3.xx) – used to enter the width of each section of the implement. Each section can be a different width. Sections are numbered from left to right while facing in the machine's forward direction. Range for each section is 0.0 to 75.0 metres. Total for all sections must be greater than 1.0 metres.
- ▶ Section offsets **2** – used to set the offset distance from section 1 (the antenna to section 1 distance line) to each section. Positive offset value will move the section behind section 1. Negative offset value will move the section in front of section 1. Section 1 is always 0 metres. All other sections can be a different distances. Sections are numbered from left to right while facing in the machine's forward direction. Range is -75.0 to 75.0 metres.

Job specific defaults

- ▶ Overlap – used to select the amount of overlap allowed when the sections are turned on and off while using automatic boom section control

Figure 43: Basic properties

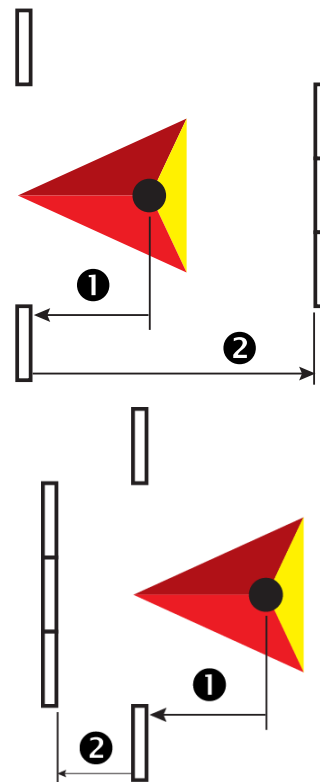


Figure 44: Implement offset distance and direction

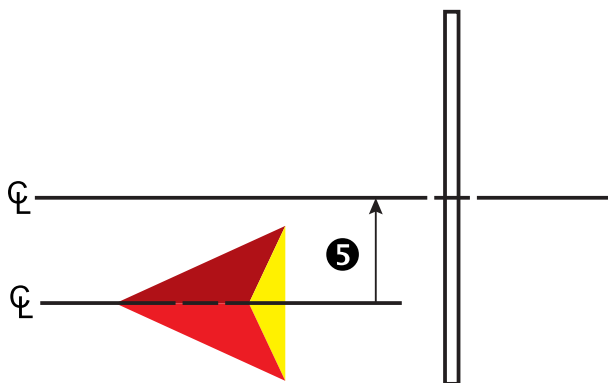


Figure 45: Machine settings – Staggered implement type

Change image

Description: Staggered 5 section
 Implement type: Staggered
 Number of implement sections: 5
 Application/working width (m): 20.00

Basic properties

Description:

GPS antenna height: m

Guidance width: m

Implement type:

ImplementOffsetDirection:

Implement Offset Distance: m

Section 1 Offset Direction:

Antenna to Section 1 Distance: m

Number of implement sections:

Tank capacity: l

ABSC enabled

Implement dynamics

Delay on time: sec

Delay off time: sec

	Section width (m)	Section offsets (m)
1	<input type="text" value="4.50"/>	<input type="text" value="0.00"/>
2	<input type="text" value="4.00"/>	<input type="text" value="1.50"/>
3	<input type="text" value="3.00"/>	<input type="text" value="1.50"/>
4	<input type="text" value="4.00"/>	<input type="text" value="1.50"/>
5	<input type="text" value="4.50"/>	<input type="text" value="0.00"/>

Job specific defaults

Overlap:

Client

A client profile gives access to details about the client including:

- Image
- Name
- Business information
- Mailing address
- Contact numbers and addresses
 - Click the GO TO button to send an e-mail or access their website
- Notes
- Associated farm(s)

NOTE: Client profiles are supported in both Matrix Pro v2.xx and Matrix Pro v3.xx.

Figure 46: Client on Matrix Pro v2.xx or Matrix Pro GS v2.xx

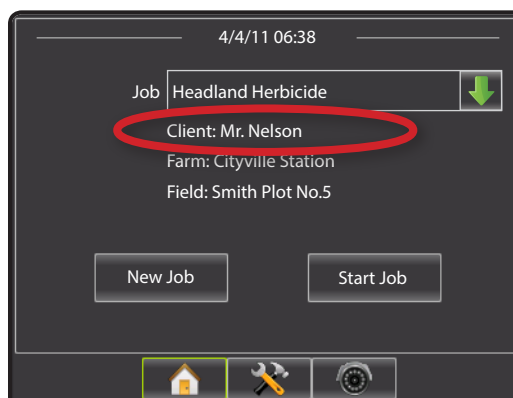


Figure 47: Client on Matrix Pro GS v3.xx

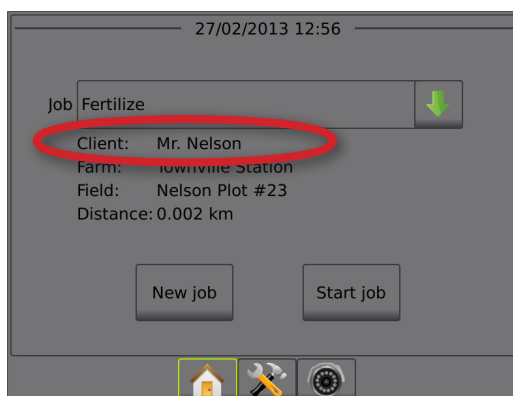



Figure 48: Client



Name: Sample: Mr. Nelson
 Business: Nelson Farms Inc.
 Contact: Business Phone

Name

Title: ▼

First:

Middle:

Last:

Suffix: ▼

Shortened:

Business

Business client

Business:

Job title:

Tax ID:

Address

Street 1:

Street 2:

City / Town:

State / Province / County:

Postal Code:

Country:

Contact

Preference: ▼

Home phone:

Mobile phone:

Business phone:

Fax:


Pager:

E-mail: ↗


Website: ↗

Notes

Names, places and numbers appearing in these clients, farms, fields, and jobs are for example use only and are otherwise fictitious. Any resemblance to real persons, locations, or values, are purely coincidental.



Townville Station



Cityville Station

Farm

A farm profile gives access to details about the farm including:

- Image
- Description
- Area
 - Each of these entries are user defined (not pulled from jobs on the Matrix Pro or Matrix Pro GS). Highlight and type over existing information or use the UP/DOWN arrows ▲▼ to make changes.
- Notes
- Associated client and field(s)

NOTE: Farm profiles are supported in both Matrix Pro v2.xx and Matrix Pro v3.xx.

Figure 49: Farm on Matrix Pro v2.xx or Matrix Pro GS v2.xx

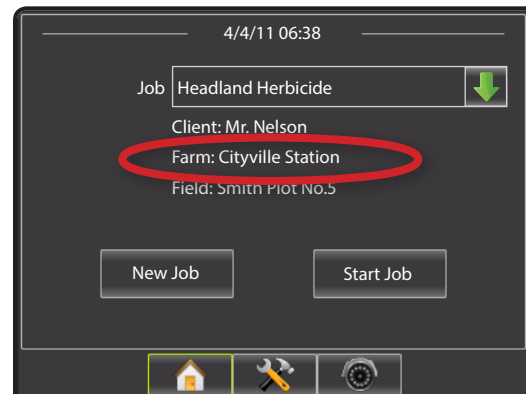


Figure 50: Farm on Matrix Pro GS v3.xx

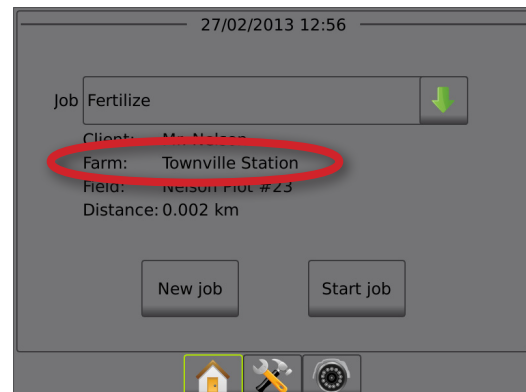


Figure 51: Farm

Description: Cityville Station
 Mapped: 0.032 ha
 Legal: 0.025 ha
 Tillable: 0.023 ha

Change image

Description
 Description: Cityville Station

Area
 Mapped: 0.032 ha
 Tillable: 0.025 ha
 Legal: 0.023 ha

Notes
 Call client for directions.

Mr. Nelson Nelson Plot #5 Nelson Plot #6

Field

A field profile gives access to details about the field including:

- Image
- Description
- Area
 - Each of these entries are user defined (not pulled from jobs on the Matrix Pro or Matrix Pro GS). Highlight and type over existing information or use the UP/DOWN arrows to make changes.
- Farm association information
 - Each of these entries are user defined. The name shown is only an example of information that can be listed. Highlight and type over existing information to make it specific to the field

NOTE: For consistency within the catalogue, the value entered in a "Name" section will be the same throughout the entire catalogue on all field tabs.

- Legal information
 - Each of these entries are user defined. The name shown is only an example of information that can be listed. Highlight and type over existing information to make it specific to the field.

NOTE: For consistency within the catalogue, the value entered in a "Name" section will be the same throughout the entire catalogue on all field tabs.

- Notes
- Associated farm and job(s)

NOTE: For consistency within the catalogue, the value entered in a "Name" section will be the same throughout the entire catalogue on all field tabs.

Field profiles are supported in both Matrix Pro v2.xx and Matrix Pro v3.xx.

Figure 52: Field on Matrix Pro v2.xx or Matrix Pro GS v2.xx

4/4/11 06:38

Job: Headland Herbicide

Client: Mr. Nelson

Farm: Cityville Station

Field: Smith Plot No.5

New Job Start Job

Figure 53: Field on Matrix Pro GS v3.xx

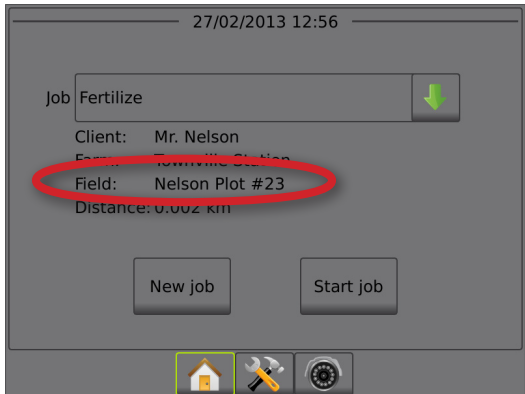
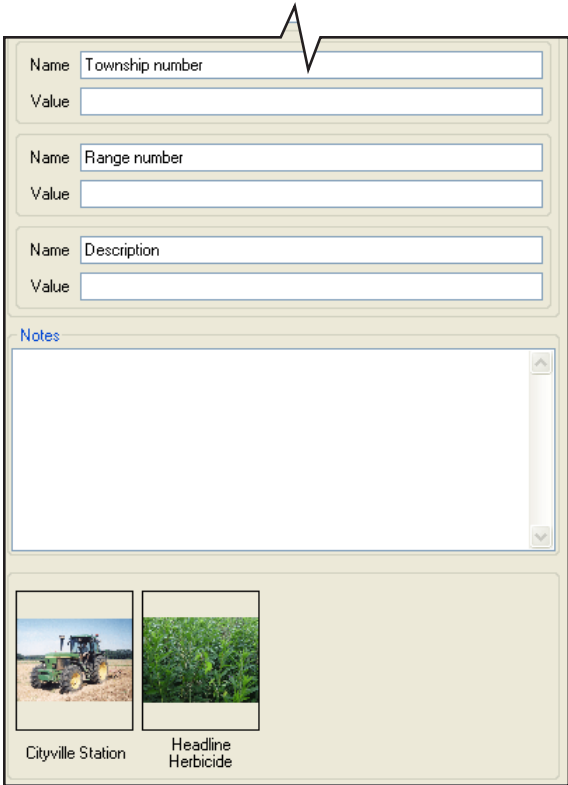
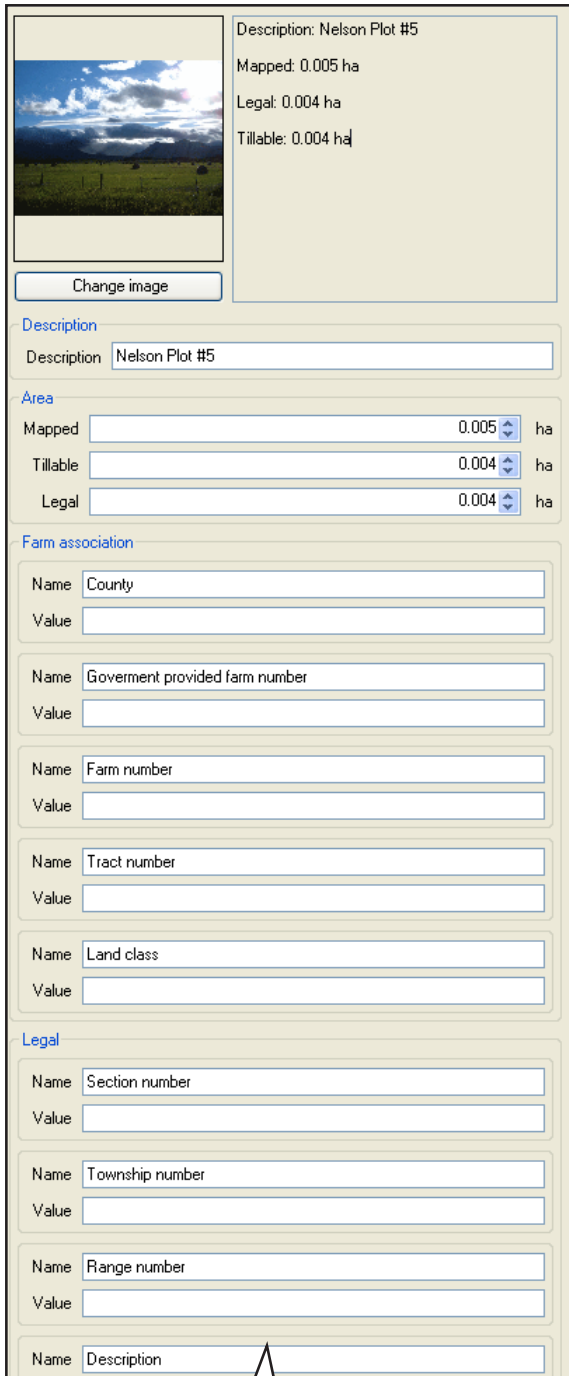


Figure 54: Field




Job

A job profile gives access to details about the job including:

- Image
- Description

NOTE: Changing the description of a job profile does not change how a particular job profile is recognized by your Matrix Pro or Matrix Pro GS console. If you are attempting to create a new job profile, please create a copy or use the appropriate new job profile option.

- Application
 - ▶ Machine settings – Click the down arrow  to select a machine settings profile to be associated with the job
 - ▶ Product – Enter a product description associated with the application or selected machine settings profile
- Notes
- Associated field

NOTE: Job profiles are supported in both Matrix Pro v2.xx and Matrix Pro v3.xx.

Figure 55: Job on Matrix Pro v2.xx or Matrix Pro GS v2.xx

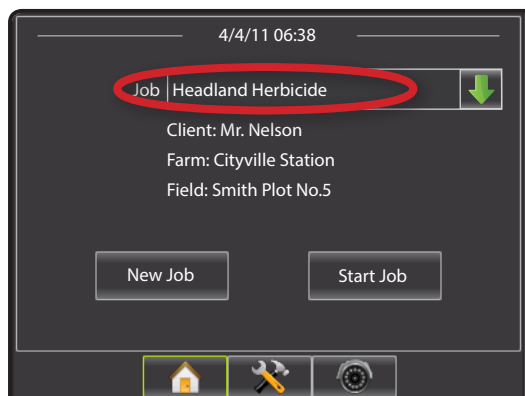
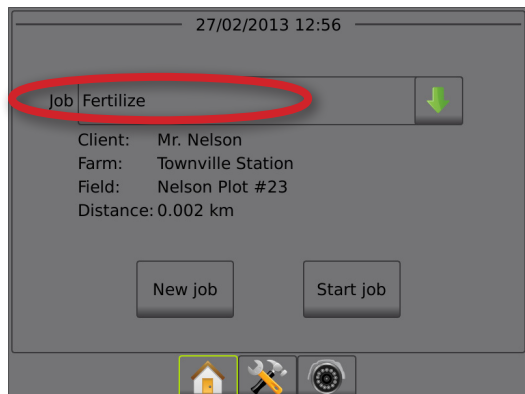


Figure 56: Job on Matrix Pro GS v3.xx

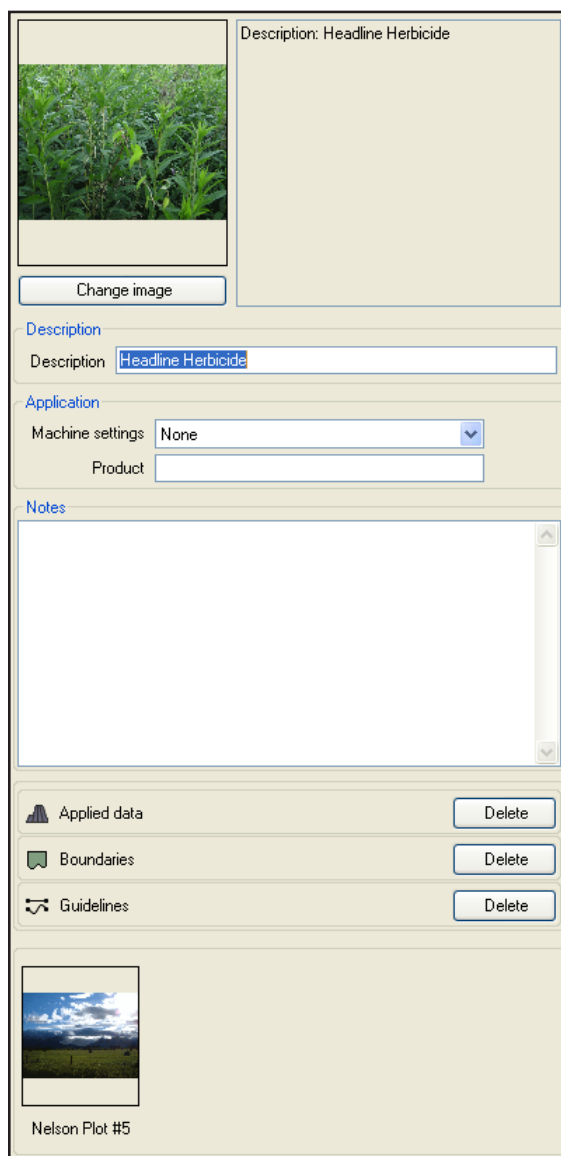


A job tab also gives the opportunity to delete the following information from the specific job:

- Applied data
- Boundaries
- Guidelines

The edited job can then be reused by importing back into the Matrix Pro or Matrix Pro GS.

Figure 57: Job


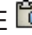



Duplicating a job for reuse

A job can be duplicated for reuse. This assists the user to use boundary and guideline data from an existing job in a future job in the same field.

NOTE: Changing the description of a job profile does not change how a particular job profile is recognized by your Matrix Pro or Matrix Pro GS console. If you are attempting to create a new job profile, please create a copy or use the appropriate new job profile option.

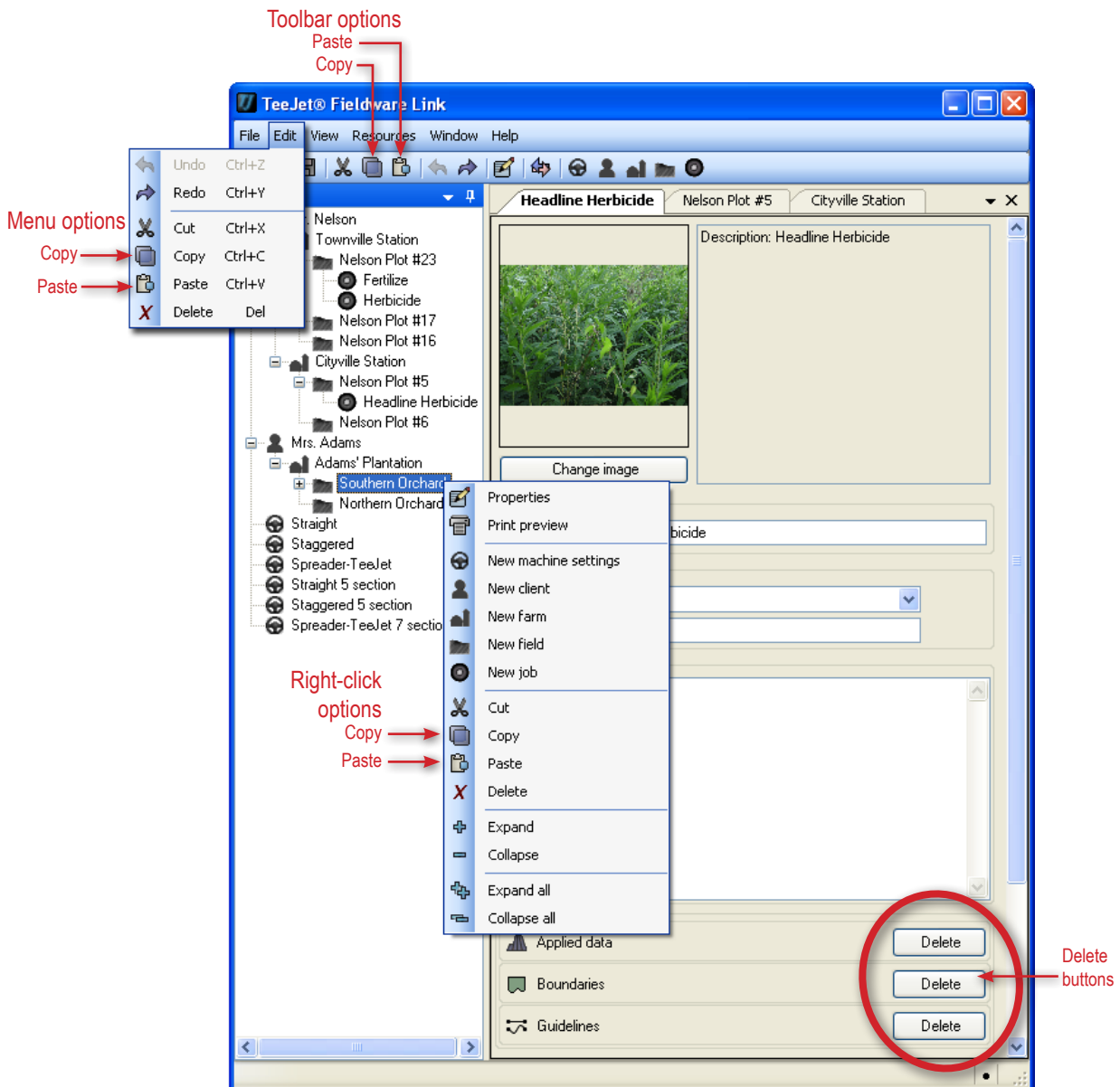
To duplicate a job:

1. On the catalogue, highlight the job.
2. Click COPY  toolbar option, menu option or catalogue right-click option.
3. Click PASTE  toolbar option, menu option or catalogue right-click option.

4. Edit the newly created job's description.
5. Edit the job's image, notes, applied area, boundaries and guidelines as needed.
 - To apply an application to an area more than once using established boundaries and guidelines, click the Applied data **Delete** button.
 - To only reuse an established guideline such as an azimuth degree line, click the Applied data and Boundaries **Delete** buttons.
 - To only reuse an established boundary, click the Applied data and Guidelines **Delete** buttons.
6. Click SAVE  to save the catalogue.

Export the duplicated job to a USB drive for use in the Matrix Pro or Matrix Pro GS.

Figure 58: Duplicating a job for reuse



IMPORTING/EXPORTING

Profiles for jobs and machine settings can be imported from or exported to a USB drive for use with the Matrix Pro or Matrix Pro GS. See the Matrix Pro or Matrix Pro GS user manual specific to the console software version for details on importing and exporting (called transfer) on the console.

To access the Port profiles tab:


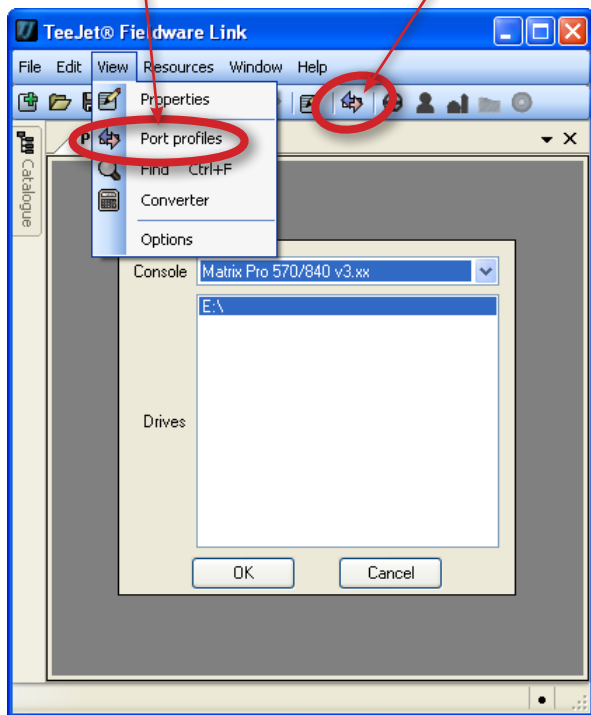
1. Click PORT PROFILES  toolbar option or menu option.
2. Select the console model.
 - ▶ Matrix Pro 570/840 v2.xx - Includes both Matrix Pro and Matrix Pro GS consoles running software version 2.xx. Machine settings are unsupported and will not be included in a port.
 - ▶ Matrix Pro 570/840 v3.xx - Includes only Matrix Pro GS consoles running software version 3.xx. All settings are supported in software version 3.0x and above.
3. Select the USB drive.
4. Click **OK**.

Figure 59: Import/Export

Menu option Toolbar option



Exporting profiles to the console

NOTE: Exporting a job profile or a client/farm/field profile containing a job profile to a USB drive will remove the job from the catalogue.

To include a selected profile to be worked with on the Matrix Pro or Matrix Pro GS:


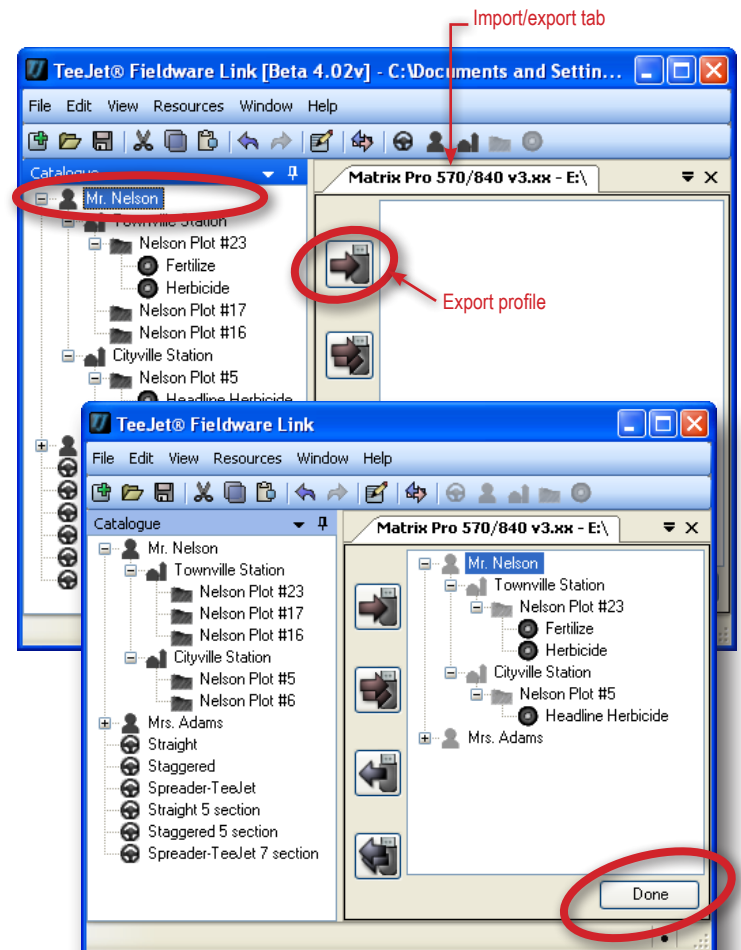
1. Access the Port profiles tab.
2. On the catalogue, highlight the profiles to be exported.
 - ◀ The machine settings profile, to copy a specific profile
 - ◀ The job, to move a specific job.
 - ◀ The field, to move all jobs associated with the selected field.
 - ◀ The farm, to move all jobs associated with the selected farm.
 - ◀ The client, to move all jobs associated with the selected client.
3. Click EXPORT PROFILE button  or click and drag to the import/export tab.
4. Repeat steps 1 to 2 as needed for other profiles.
5. Click **DONE**.
6. Remove USB drive.
7. Insert USB drive into Matrix Pro or Matrix Pro GS.
8. Follow instructions for the specific console software version.

Figure 60: Exporting profiles to the console



Jobs with associated machine settings

If a job profile has application settings associated, the machine settings profile will also be exported. Along with transferring the job profile to the Matrix Pro GS console, the machine settings profile must be transferred into the Matrix Pro GS under the Data->Machine Settings->Transfer options.

Figure 61: Job application settings

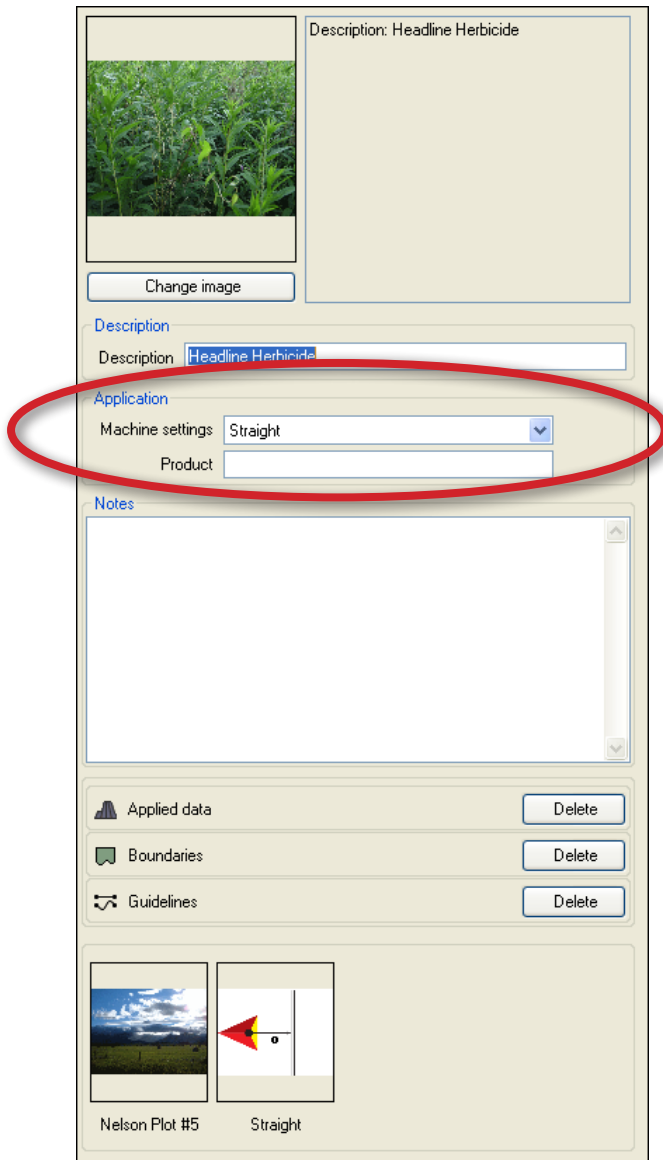
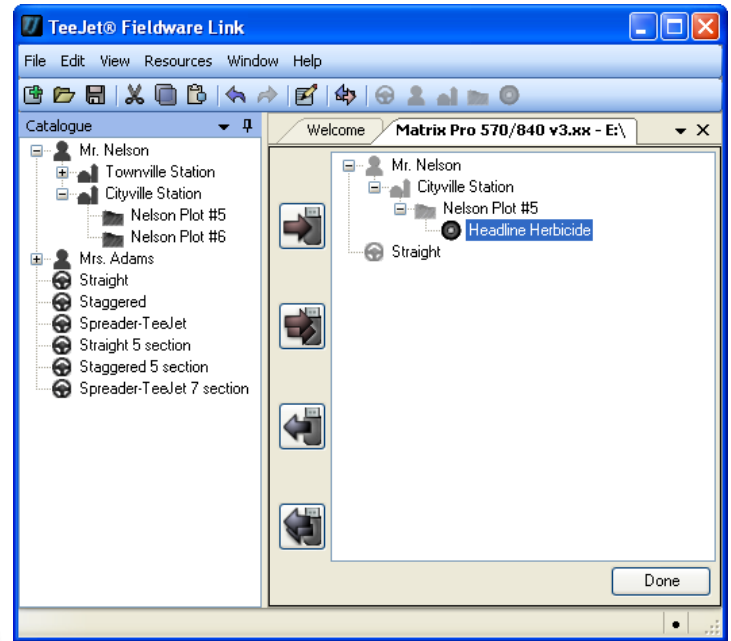


Figure 62: Exporting job with associated machine settings




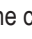
Importing/merging profiles from the console

If a job (or jobs) being imported/merged has not been created or edited in Fieldware Link, it will be placed in a new client (named "Unknown") in the catalogue. The imported/merged job(s) can be manually moved to a different client, farm or field; or the new client, farm and field can be edited and saved.

Changing the description of a job or machine settings profile does not change how a particular job or machine settings profile is recognized by your Matrix Pro or Matrix Pro GS console. If you change the name and export the profile to import it on to the Matrix Pro or Matrix Pro GS, it will override or merge the previous profile with the renamed profile.

NOTE: Importing/merging a profile from a USB drive will remove/delete it from the USB drive.

To import/merge a selected profile back into the catalogue:

1. Follow instructions for the specific console software version to transfer the profiles to a USB drive.
2. Access the Port profiles tab.
3. From the USB drive window, highlight the profiles to be merged.
 - ◀ The machine settings profile, to move a specific profile.
 - ◀ The job, to move a specific job.
 - ◀ The field, to move all jobs associated with the selected field.
 - ◀ The farm, to move all jobs associated with the selected farm.
 - ◀ The client, to move all jobs associated with the selected client.
4. Click MERGE SELECTED button , right-click and select MERGE  or click and drag to the catalogue*.
5. Repeat steps 1 to 2 as needed for other profiles.
6. Click **DONE**.
7. Remove USB drive.

*Clicking and dragging into the catalogue will place the job where dropped - not where it was associated on the USB drive.

To merge all jobs back into the catalogue:


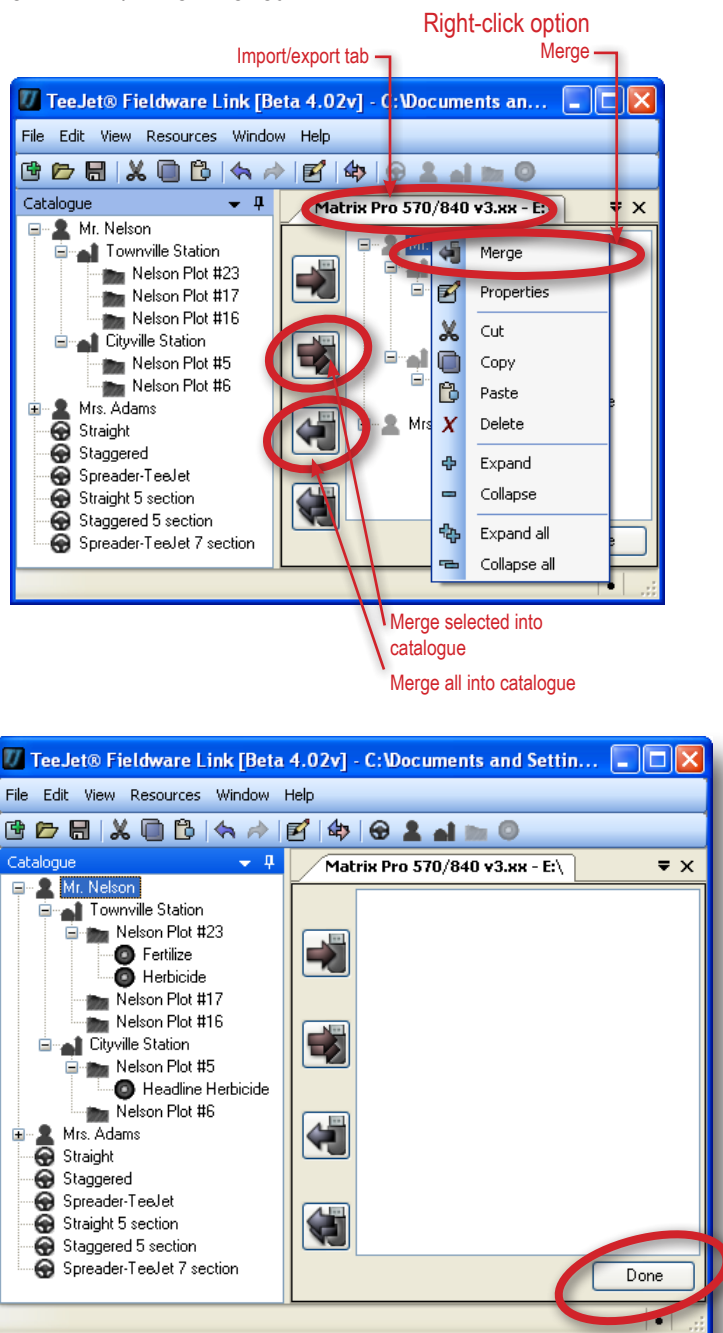
1. Follow instructions for the specific console software version to transfer the profiles to a USB drive.
2. Access the Port profiles tab.
3. Click MERGE ALL button .
4. Click **DONE**.
5. Remove USB drive.

Figure 63: Importing/merging job data from the console



Machine settings availability

Setting	Can be edited in		Saved to exported profile in		
	Matrix Pro GS v3.xx	FieldWare Link	Matrix Pro GS v3.xx	FieldWare Link	
Machine type	✓	✗	✓	retained from Matrix Pro GS	
GPS antenna height	✓	✓	✓	✓	
Implement type	✓	✓	✓	✓	
Symmetric implement layout	✓	✗	✗	✗	
Implement offset distance	✓	✓	✓	✓	
Implement offset direction	✓	✓	✓	✓	
Number of implement sections	✓	✓	✓	✓	
Guidance width	✓	✓	✓	✓	
Application/working width	✓	✓	✓	✓	
Applied area alarm	✓	✗	✗	✗	
Implement	Straight mode	Boom offset direction	✓	✓	✓
		Antenna to boom distance	✓	✓	✓
		Overlap	✓	✓	✓
		Delay on/off times	✓	✓	✓
	Spreader mode	Setup type: TeeJet	✓	✓	✓
		Antenna to disks distance	✓	✓	✓
		Overlap	✓	✓	✓
		Delay on/off times	✓	✓	✓
		Spread offset distance	✓	✓	✓
		Section offsets	✓	✓	✓
		Section lengths	✓	✓	✓
		Setup type: OEM	✓	✓	✓
	Antenna to disks distance	✓	✓	✓	
	Staggered mode	Start/stop distance	✓	✓	✓
		Section start/stop offsets	✓	✓	✓
		Section 1 offset direction	✓	✓	✓
Antenna to section 1 distance		✓	✓	✓	
Overlap	Overlap	✓	✓	✓	
	Delay on/off times	✓	✓	✓	
Section offsets	Section offsets	✓	✓	✓	
	Section lengths	✓	✓	✓	
Application	Machine settings	✗	✓	✗	
	Product	✗	✓	✗	
AutoSteer	Enabled/disabled	✓	✗	✓	
	Valve setup	Valve type	✓	✗	✓
		Valve frequency	✓	✗	✓
		Minimum duty cycle left/ right	✓	✗	✓
		Maximum duty cycle	✓	✗	✓
	Steering settings	Coarse steering adjustment	✓	✗	✓
		Fine steering adjustment	✓	✗	✓
		Deadband	✓	✗	✓
		Lookahead	✓	✗	✓
	Valve test	✓	✗	✓	
	Valve diagnostics	✓	✗	✓	
	Options	Steering wheel sensor	✓	✗	✓
Steering Sensor	Enable	✓	✗	✓	
	Angle Sensor calibration	✓	✗	✓	
	On line calibration	✓	✗	✓	
Tilt correction	Enabled/disabled	✓	✗	✓	
	Field level	✓	✗	✓	

Setting	Can be edited in		Saved to exported profile in	
	Matrix Pro GS v3.xx	FieldWare Link	Matrix Pro GS v3.xx	FieldWare Link
Lightbar	✓	✗	✗	✗
GPS	✓	✗	✗	✗
Video	✓	✗	✗	✗
Sensors	<ul style="list-style-type: none"> – Pressure: Maximum pressure rating Low pressure alarm High pressure alarm 	✗	✗	✗
		✓	✗	✗
		✓	✗	✗
Droplet size monitor	<ul style="list-style-type: none"> – Enabled/disabled – Nozzle selection 	✓	✗	✗
		✓	✗	✗

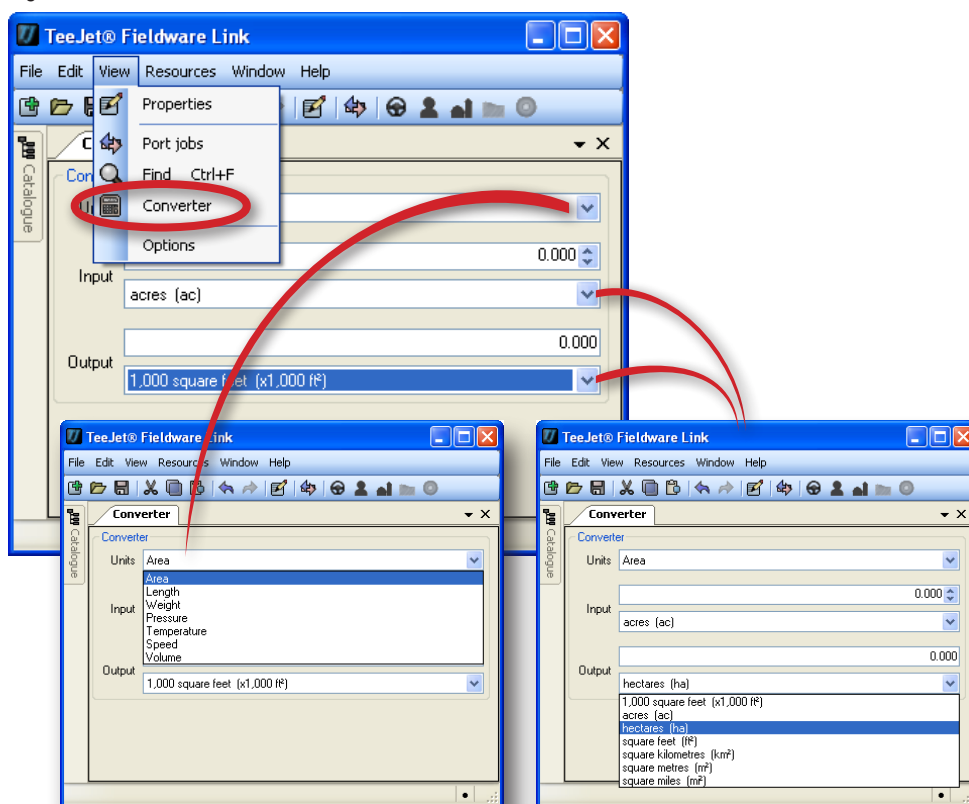
CONVERTER

Convert area, length, weight, pressure, temperature, speed or volume from one unit of measurement to another.

1. Open the View menu.
2. Click **Converter**.
3. Click DOWN arrow ▼ to select the units to be converted.
4. Click DOWN arrow ▼ to select the input value units.
5. Click DOWN arrow ▼ to select the output value units
6. Highlight and type over existing input value or use the UP/DOWN arrows ▲/▼ to make changes.

Converted value will appear in the output section.


Figure 64: Converter



PRINT PREVIEW

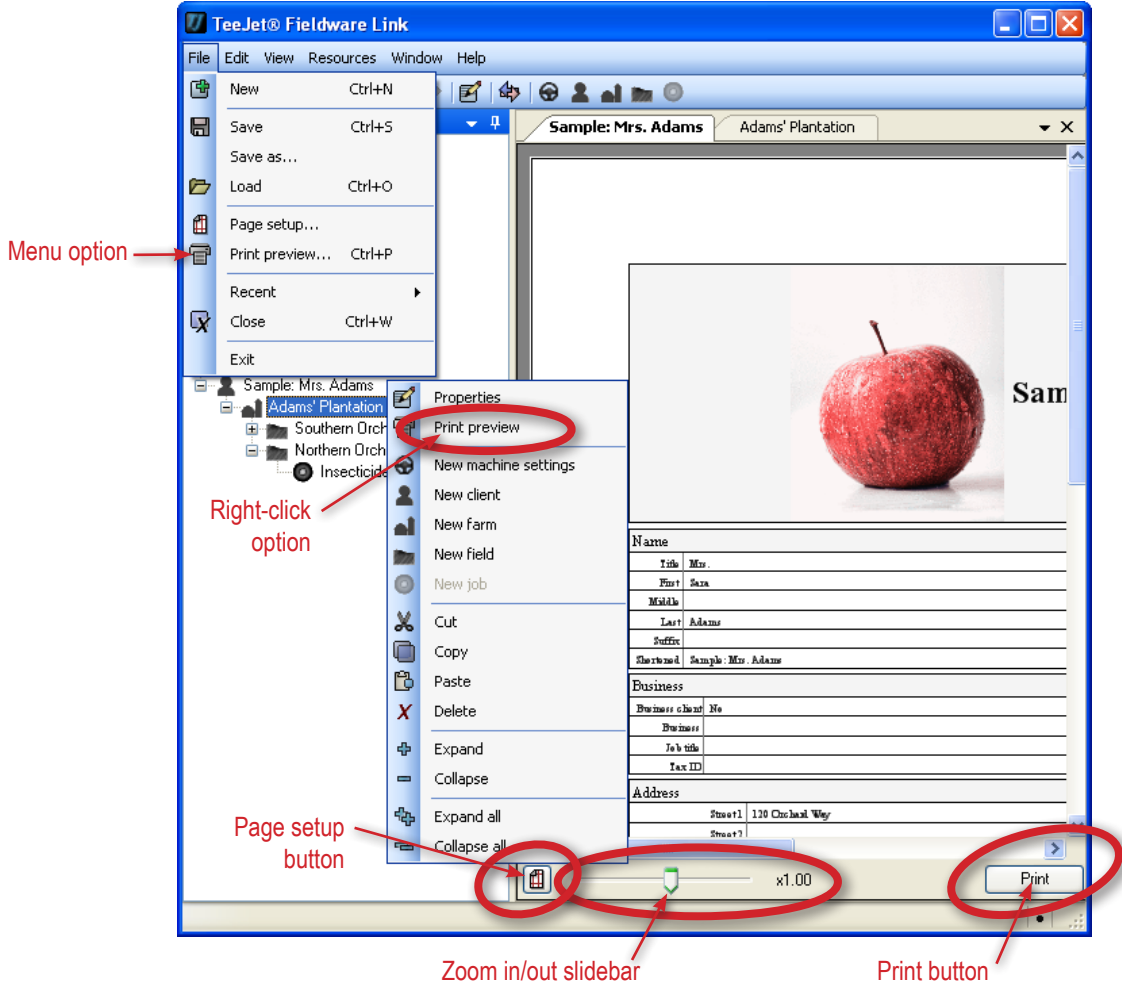
Print preview provides a preview of a profile for machine settings, client, farm, field or job to be printed and gives access to the **Print** button.

To preview a profile for machine settings, client, farm, field or job:

1. On the catalogue, highlight the machine settings, client, farm, field or job.
2. Click PRINT PREVIEW  menu option or catalogue right-click option.

A new tab with a preview of the selected will be made. From here you can print, zoom in or out or access the page setup for the previewed page.

Figure 65: Print preview



FIELDWARE® LINK

U S E R M A N U A L

- Enhanced data organisation with Fieldware Link application
 - Reuse guidelines and/or boundaries
 - Input job details such as names or images
 - Setup machine settings for specific vehicles and implements

MATRIX® PRO
MATRIX® PROcs



TeeJet Aabybro
Mølhavevej 2
DK 9440 Aabybro
Danmark
www.teejet.com

A Subsidiary of  *Spraying Systems Co.*®