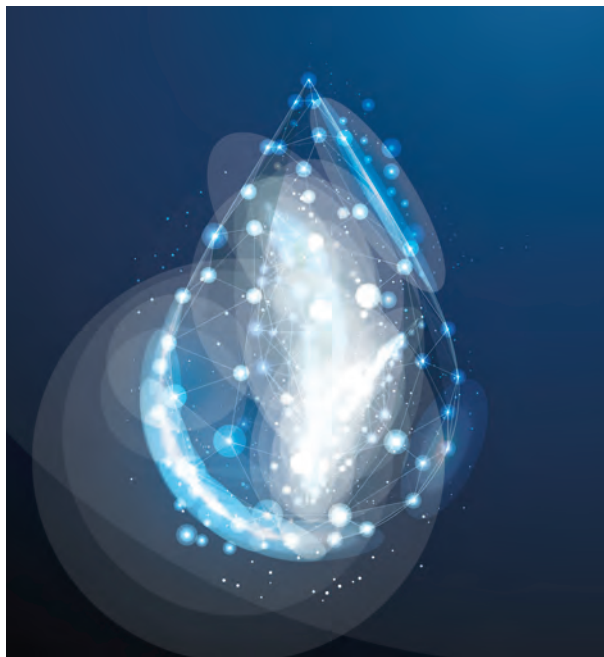


MAKE EVERY DROP COUNT WITH YOUR PWM CONTROL



PWM spray tip control systems, like DynaJet®, use a PWM (Pulse Width Modulation) valve located at the nozzle body to adjust spray tip flow rate when changes in speed are detected. Spray tips that are paired with PWM controls are serving two main purposes—the formation of the spray pattern and droplet size. Target droplet size selection should be based on providing sufficient coverage for proper control while balancing out needs for drift management.

With air induction tips air is mixed with water through a venturi air aspirator that produces large air-filled droplets. When a PWM valve is used in conjunction with certain air induction tips, the mixing chamber and air inlet can fill with water as the PWM valve cycles. This can then result in water escaping out the air inlet holes, which can lead to poor distribution. New designs in air-induction tips however, have been proven to work well with PWM valves and nozzle control systems.

WHAT MAKES A TEEJET SPRAY TIP “PWM APPROVED”?

Based on a combination of field and laboratory testing, PWM approved spray tips must meet the following criteria at a variety of duty-cycles:

- Excellent spray distribution in the direction of travel
- Rapid and complete spray pattern formation
- Excellent spray distribution across the boom
- Skip-free application
- Droplet size consistency





DYNAJET® PWM APPLICATION RATE CHARTS FOR SYSTEMS EQUIPPED WITH 115880 DYNAJET VALVES



15" TIP SPACING

SELECTION GUIDE

TIP SIZE	GAUGE PRESSURE (PSI)	30% MINIMUM DUTY CYCLE							SPEED RANGE (MPH)																		
		TJ60	XR/XRC	TT	TTJ60	AITTJ60	TTI60	TTI	APTJ*	5 GPA		7.5 GPA		10 GPA		12 GPA		15 GPA		17.5 GPA		20 GPA		25 GPA		30 GPA	
										MIN	MAX	MIN	MAX	MIN	MAX	MIN	MAX	MIN	MAX	MIN	MAX	MIN	MAX	MIN	MAX	MIN	MAX
11001	20									1.7	6	1.1	4	0.8	3	0.7	2	0.6	1.8	0.5	1.6	0.4	1.4	0.3	1.1	0.3	0.9
	30		F	M						2	7	1.4	5	1.1	4	0.9	3	0.7	2	0.6	1.8	0.5	1.6	0.4	1.4	0.3	1.1
	40		F	M						2	8	1.6	5	1.2	4	1.0	3	0.8	3	0.7	2	0.6	2	0.5	1.6	0.4	1.3
	50		F	M						3	9	1.7	6	1.3	4	1.1	4	0.9	3	0.7	2	0.6	2	0.5	1.7	0.4	1.5
	60		F	M						3	10	2	6	1.4	5	1.2	4	1.0	3	0.8	3	0.7	2	0.6	2	0.5	1.6
	70		F	M						3	10	2	7	1.5	5	1.3	4	1.0	3	0.9	3	0.8	3	0.6	2	0.5	1.7
	80		F	M						3	11	2	7	1.7	6	1.4	5	1.1	4	1.0	3	0.8	3	0.7	2	0.6	1.8
	90		F	M						4	12	2	8	1.8	6	1.5	5	1.2	4	1.0	3	0.9	3	0.7	2	0.6	2
	110015	20		F	VC				UC	UC	3	9	1.7	6	1.3	4	1.1	4	0.9	3	0.7	2	0.7	2	0.5	1.7	0.4
30			F	VC				UC	UC	3	10	2	7	1.5	5	1.3	4	1.0	3	0.9	3	0.8	3	0.6	2	0.5	1.7
40			F	VC				UC	UC	4	12	2	8	1.8	6	1.5	5	1.2	4	1.0	3	0.9	3	0.7	2	0.6	2
50			F	VC				UC	UC	4	13	3	9	2	7	1.7	6	1.3	4	1.2	4	1.0	3	0.8	3	0.7	2
60			F	VC				UC	UC	4	14	3	10	2	7	1.8	6	1.4	5	1.2	4	1.1	4	0.9	3	0.7	2
70			F	VC				UC	UC	5	16	3	11	2	8	2	7	1.6	5	1.4	5	1.2	4	1.0	3	0.8	3
80			F	VC				UC	UC	5	17	3	11	2	8	2	7	1.7	6	1.4	5	1.2	4	1.0	3	0.8	3
90			F	VC				UC	UC	5	18	4	12	3	9	2	8	1.8	6	1.6	5	1.4	5	1.1	4	0.9	3
11002		20		F	M	C	VC	VC	UC	UC	3	11	2	7	1.7	6	1.4	5	1.1	4	1.0	3	0.8	3	0.7	2	0.6
	30		F	M	C	VC	VC	UC	UC	4	13	3	9	2	7	1.7	6	1.3	4	1.2	4	1.0	3	0.8	3	0.7	2
	40		F	M	C	VC	VC	UC	UC	5	16	3	11	2	8	2	7	1.6	5	1.4	5	1.2	4	1.0	3	0.8	3
	50		F	M	C	VC	VC	UC	UC	5	17	3	12	3	9	2	7	1.7	6	1.5	5	1.3	4	1.0	3	0.9	3
	60		F	M	C	VC	VC	UC	UC	6	19	4	13	3	10	2	8	2	6	1.6	5	1.4	5	1.1	4	1.0	3
	70		F	M	C	VC	VC	UC	UC	6	21	4	14	3	10	3	9	2	7	1.8	6	1.5	5	1.2	4	1.0	3
	80		F	M	C	VC	VC	UC	UC	7	22	4	15	3	11	3	9	2	7	2	6	1.7	6	1.3	4	1.1	4
	90		F	M	C	VC	VC	UC	UC	7	24	5	16	4	12	3	10	2	8	2	7	1.8	6	1.4	5	1.2	4
	11025	20		M	VC	VC	VC	VC	UC	UC	4	14	3	10	2	7	1.8	6	1.4	5	1.2	4	1.1	4	0.9	3	0.7
30			M	VC	VC	VC	VC	UC	UC	5	17	3	12	3	9	2	7	1.7	6	1.5	5	1.3	4	1.0	3	0.9	3
40			F	M	VC	VC	VC	UC	UC	6	20	4	13	3	10	2	8	2	7	1.7	6	1.5	5	1.2	4	1.0	3
50			F	M	VC	VC	VC	UC	UC	7	22	4	15	3	11	3	9	2	7	2	6	1.7	6	1.3	4	1.1	4
60			F	M	VC	VC	VC	UC	UC	7	25	5	16	4	12	3	10	2	8	2	7	1.8	6	1.5	5	1.2	4
70			F	M	VC	VC	VC	UC	UC	8	26	5	17	4	13	3	11	3	9	2	7	2	7	1.6	5	1.3	4
80			F	M	VC	VC	VC	UC	UC	8	28	6	18	4	14	3	12	3	9	2	8	2	7	1.7	6	1.4	5
90			F	M	VC	VC	VC	UC	UC	9	30	6	20	5	15	4	13	3	10	3	9	2	8	1.8	6	1.5	5
11003		20		M	VC	VC	VC	VC	UC	UC	5	17	3	11	2	8	2	7	1.7	6	1.4	5	1.2	4	1.0	3	0.8
	30		M	VC	VC	VC	VC	UC	UC	6	21	4	14	3	10	3	9	2	7	1.8	6	1.5	5	1.2	4	1.0	3
	40		F	M	VC	VC	VC	UC	UC	7	24	5	16	4	12	3	10	2	8	2	7	1.8	6	1.4	5	1.2	4
	50		F	M	VC	VC	VC	UC	UC	8	26	5	17	4	13	3	11	3	9	2	7	2	7	1.6	5	1.3	4
	60		F	M	VC	VC	VC	UC	UC	9	29	6	19	4	14	4	12	3	10	2	8	2	7	1.7	6	1.4	5
	70		F	M	VC	VC	VC	UC	UC	9	31	6	21	5	15	4	13	3	10	3	9	2	8	1.9	6	1.5	5
	80		F	M	VC	VC	VC	UC	UC	10	32	6	22	5	16	4	14	3	11	3	9	2	8	2	6	1.6	5
	90		F	M	VC	VC	VC	UC	UC	10	35	7	23	5	17	4	15	3	12	3	10	3	9	2	7	1.7	6
	11004	20		M	VC	VC	VC	VC	UC	UC	6	21	4	14	3	11	3	9	2	7	1.8	6	1.6	5	1.3	4	1.1
30			M	VC	VC	VC	VC	UC	UC	8	27	5	18	4	13	3	11	3	9	2	8	2	7	1.6	5	1.3	4
40			F	M	VC	VC	VC	UC	UC	9	31	6	21	5	15	4	13	3	10	3	9	2	8	1.9	6	1.5	5
50			F	M	VC	VC	VC	UC	UC	10	35	7	23	5	17	4	15	3	12	3	10	3	9	2	7	1.7	6
60			F	M	VC	VC	VC	UC	UC	11	38	8	25	6	19	5	16	4	13	3	11	3	10	2	8	2	6
70			F	M	VC	VC	VC	UC	UC	12	41	8	27	6	21	5	17	4	14	4	12	3	10	2	8	2	7
80			F	M	VC	VC	VC	UC	UC	13	44	9	29	7	22	5	18	4	15	4	12	3	11	3	9	2	7
90			F	M	VC	VC	VC	UC	UC	14	46	9	31	7	23	6	19	5	15	4	13	3	11	3	9	2	8
11005		20		M	VC	VC	VC	VC	UC	UC	8	27	5	18	4	13	3	11	3	9	2	8	2	7	1.6	5	1.3
	30		M	VC	VC	VC	VC	UC	UC	10	32	6	22	5	16	4	14	3	11	3	9	2	8	2	6	1.6	5
	40		M	VC	VC	VC	VC	UC	UC	11	38	8	25	6	19	5	16	4	13	3	11	3	10	2	8	2	6
	50		M	VC	VC	VC	VC	UC	UC	13	43	9	29	6	21	5	18	4	14	4	12	3	11	3	9	2	7
	60		M	VC	VC	VC	VC	UC	UC	14	46	9	31	7	23	6	19	5	15	4	13	3	11	3	9	2	8
	70		M	VC	VC	VC	VC	UC	UC	15	50	10	33	7	25	6	21	5	17	4	14	4	12	3	10	2	8
	80		M	VC	VC	VC	VC	UC	UC	16	54	11	36	8	27	7	22	5	18	5	15	4	13	3	11	3	9
	90		M	VC	VC	VC	VC	UC	UC	17	57	11	38	9	29	7	24	6	19	5	16	4	14	3	11	3	10
	11006	20		M	VC	VC	VC	VC	UC	UC	9	31	6	21	5	15	4	13	3	10	3	9	2	8	1.9	6	1.5
30			M	VC	VC	VC	VC	UC	UC	12	39	8	26	6	19	5	16	4	13	3	11	3	10	2	8	2	6
40			M	VC	VC	VC	VC	UC	UC	13	44	9	30	7	22	6	18	4	15	4	13	3	11	3	9	2	7
50			M	VC	VC	VC	VC	UC	UC	15	50	10	33	7	25	6	21	5	17	4	14	4	12	3	10	2	8
60			M	VC	VC	VC	VC	UC	UC	16	54	11	36	8	27	7	22	5	18	5	15	4	13	3	11	3	9
70			M	VC	VC	VC	VC	UC	UC	18	59	12	39	9	29	7	24	6	20	5	17	4	15	4	12	3	10
80			M	VC	VC	VC	VC	UC	UC	19	63	13	42	9	31	8	26	6	21	5	18	5	16	4	13	3	10
90			M	VC	VC	VC	VC	UC	UC	20	67	13	44	10	33	8	28	7	22	6	19	5	17	4	13	3	11
11008		20		M	VC	VC	VC	VC	UC	UC	12	40	8	26	6	20	5	17	4	13	3	11	3	10	2	8	2
	30		M	VC	VC	VC	VC	UC	UC	14	48	10	32	7	24	6	20	5	16	4	14	4	12	3	10	2	8
	40		M	VC	VC	VC	VC	UC																			



DYNAJET® PWM APPLICATION RATE CHARTS FOR SYSTEMS EQUIPPED WITH 115880 DYNAJET VALVES



20" TIP SPACING

SELECTION GUIDE

TIP SIZE	GAUGE PRESSURE (PSI)	30% MINIMUM DUTY CYCLE							SPEED RANGE (MPH)																		
		TJ60	XR/XRC	TT	TTJ60	A1TTJ60	TTI60	TTI	APTJ*	5 GPA		7.5 GPA		10 GPA		12 GPA		15 GPA		17.5 GPA		20 GPA		25 GPA		30 GPA	
										MIN	MAX	MIN	MAX	MIN	MAX	MIN	MAX	MIN	MAX	MIN	MAX	MIN	MAX	MIN	MAX	MIN	MAX
11001	20		F	C						1.2	4	0.8	3	0.6	2	0.5	1.7	0.4	1.4	0.4	1.2	0.3	1.0	0.2	0.8	0.2	0.7
	30		F	M						1.6	5	1.1	4	0.8	3	0.7	2	0.5	1.8	0.5	1.5	0.4	1.3	0.3	1.1	0.3	0.9
	40		F	M						1.8	6	1.2	4	0.9	3	0.7	2	0.6	2	0.5	1.7	0.4	1.5	0.4	1.2	0.3	1.0
	50		F	M						2	7	1.3	4	1.0	3	0.8	3	0.7	2	0.6	1.9	0.5	1.6	0.4	1.3	0.3	1.1
	60		VF	M						2	7	1.4	5	1.1	4	0.9	3	0.7	2	0.6	2	0.5	1.8	0.4	1.4	0.4	1.2
	70			F	M					2	8	1.5	5	1.2	4	1.0	3	0.8	3	0.7	2	0.6	2	0.5	1.5	0.4	1.3
	80			F	F					2	8	1.7	6	1.2	4	1.0	3	0.8	3	0.7	2	0.6	2	0.5	1.7	0.4	1.4
90			F	F					3	9	1.8	6	1.3	4	1.1	4	0.9	3	0.8	3	0.7	2	0.5	1.8	0.4	1.5	
110015	20		F	VC				UC	UC	2	7	1.3	4	1.0	3	0.8	3	0.7	2	0.6	1.9	0.5	1.6	0.4	1.3	0.3	1.1
	30		F	C				UC	UC	2	8	1.5	5	1.2	4	1.0	3	0.8	3	0.7	2	0.6	2	0.5	1.5	0.4	1.3
	40		F	M				XC	UC	3	9	1.8	6	1.3	4	1.1	4	0.9	3	0.8	3	0.7	2	0.5	1.8	0.4	1.5
	50		F	M				XC	UC	3	10	2	7	1.5	5	1.3	4	1.0	3	0.9	3	0.8	3	0.6	2	0.5	1.7
	60		F	M				XC	XC	3	11	2	7	1.6	5	1.3	4	1.1	4	0.9	3	0.8	3	0.6	2	0.5	1.8
	70			M				VC	XC	4	12	2	8	1.8	6	1.5	5	1.2	4	1.0	3	0.9	3	0.7	2	0.6	2
	80			F				VC	XC	4	12	2	8	1.9	6	1.6	5	1.2	4	1.1	4	0.9	3	0.7	2	0.6	2
90			F				VC	XC	4	14	3	9	2	7	1.7	6	1.4	5	1.2	4	1.0	3	0.8	3	0.7	2	
11002	20		M	VC	C	XC	UC	UC	UC	2	8	1.7	6	1.2	4	1.0	3	0.8	3	0.7	2	0.6	2	0.5	1.7	0.4	1.4
	30		F	C	C	VC	XC	UC	UC	3	10	2	7	1.5	5	1.3	4	1.0	3	0.9	3	0.8	3	0.6	2	0.5	1.7
	40		F	M	M	M	VC	XC	XC	4	12	2	8	1.8	6	1.5	5	1.2	4	1.0	3	0.9	3	0.7	2	0.6	2
	50		F	M	M	M	C	VC	VC	4	13	3	9	2	7	1.6	5	1.3	4	1.1	4	1.0	3	0.8	3	0.7	2
	60		F	M	M	M	C	VC	VC	4	14	3	10	2	7	1.8	6	1.4	5	1.2	4	1.1	4	0.9	3	0.7	2
	70			M	M	M	C	VC	VC	5	15	3	10	2	8	2	6	1.5	5	1.3	4	1.2	4	0.9	3	0.8	3
	80			F	M	M	C	VC	VC	5	17	3	11	2	8	2	7	1.7	6	1.4	5	1.2	4	1.0	3	0.8	3
90			F	M	M	C	VC	VC	5	18	4	12	3	9	2	7	1.8	6	1.5	5	1.3	4	1.1	4	0.9	3	
11025	20		M	VC	C	XC	UC	UC	UC	3	11	2	7	1.6	5	1.3	4	1.1	4	0.9	3	0.8	3	0.6	2	0.5	1.8
	30		F	C	C	VC	XC	UC	UC	4	13	3	9	2	7	1.6	5	1.3	4	1.1	4	1.0	3	0.8	3	0.7	2
	40		F	M	M	M	VC	XC	XC	4	15	3	10	2	7	1.9	6	1.5	5	1.3	4	1.1	4	0.9	3	0.7	2
	50		F	M	M	M	VC	XC	XC	5	17	3	11	2	8	2	7	1.7	6	1.4	5	1.2	4	1.0	3	0.8	3
	60		F	M	M	M	C	VC	VC	6	18	4	12	3	9	2	8	1.8	6	1.6	5	1.4	5	1.1	4	0.9	3
	70			M	M	M	C	VC	VC	6	20	4	13	3	10	2	8	2	7	1.7	6	1.5	5	1.2	4	1.0	3
	80			F	M	M	C	VC	VC	6	21	4	14	3	10	3	9	2	7	1.8	6	1.6	5	1.2	4	1.0	3
90			F	M	M	C	VC	VC	7	23	5	15	3	11	3	9	2	8	2	6	1.7	6	1.4	5	1.1	4	
11003	20		M	VC	C	XC	UC	UC	UC	4	12	2	8	1.9	6	1.6	5	1.2	4	1.1	4	0.9	3	0.7	2	0.6	2
	30		F	C	C	VC	XC	UC	UC	5	15	3	10	2	8	2	6	1.5	5	1.3	4	1.2	4	0.9	3	0.8	3
	40		F	M	M	M	VC	XC	XC	5	18	4	12	3	9	2	7	1.8	6	1.5	5	1.3	4	1.1	4	0.9	3
	50		F	M	M	M	VC	XC	XC	6	20	4	13	3	10	2	8	2	7	1.7	6	1.5	5	1.2	4	1.0	3
	60		F	M	M	M	C	VC	VC	6	21	4	14	3	11	3	9	2	7	1.8	6	1.6	5	1.3	4	1.1	4
	70			M	M	M	C	VC	VC	7	23	5	15	3	12	3	10	2	8	2	7	1.7	6	1.4	5	1.2	4
	80			F	M	M	C	VC	VC	7	24	5	16	4	12	3	10	2	8	2	7	1.8	6	1.5	5	1.2	4
90			F	M	M	C	VC	VC	8	26	5	17	4	13	3	11	3	9	2	7	1.8	6	1.5	5	1.3	4	
11004	20		M	VC	C	XC	UC	UC	UC	5	16	3	11	2	8	2	7	1.6	5	1.4	5	1.2	4	1.0	3	0.8	3
	30		F	C	C	VC	XC	UC	UC	6	20	4	13	3	10	3	8	2	7	1.7	6	1.5	5	1.2	4	1.0	3
	40		F	M	M	M	VC	XC	XC	7	23	5	15	3	12	3	10	2	8	2	7	1.7	6	1.4	5	1.2	4
	50		F	M	M	M	VC	XC	XC	8	26	5	17	4	13	3	11	3	9	2	7	1.7	6	1.6	5	1.3	4
	60		F	M	M	M	C	VC	VC	9	29	6	19	4	14	4	12	3	10	2	8	2	7	1.7	6	1.4	5
	70			M	M	M	C	VC	VC	9	31	6	21	5	15	4	13	3	10	3	9	2	8	1.9	6	1.5	5
	80			F	M	M	C	VC	VC	10	33	7	22	5	16	4	14	3	11	3	9	2	8	2	7	1.6	5
90			F	M	M	C	VC	VC	10	34	7	23	5	17	4	14	3	11	3	10	3	9	2	7	1.7	6	
11005	20		M	VC	C	XC	UC	UC	UC	6	20	4	13	3	10	3	8	2	7	1.7	6	1.5	5	1.2	4	1.0	3
	30		M	C	C	VC	XC	UC	UC	7	24	5	16	4	12	3	10	2	8	2	7	1.8	6	1.5	5	1.2	4
	40		M	M	M	M	VC	XC	XC	9	29	6	19	4	14	4	12	3	10	2	8	2	7	1.7	6	1.4	5
	50		M	M	M	M	VC	XC	XC	10	32	6	21	5	16	4	13	3	11	3	9	2	8	2	6	1.6	5
	60		M	M	M	M	C	VC	VC	10	34	7	23	5	17	4	14	3	11	3	10	3	9	2	7	1.7	6
	70			M	M	M	VC	XC	XC	11	37	7	25	6	19	5	16	4	12	3	11	3	9	2	7	1.9	6
	80			M	M	M	C	VC	VC	12	40	8	27	6	20	5	17	4	13	3	12	3	10	2	8	2	7
90			F	M	M	C	VC	VC	13	43	9	29	6	21	5	18	4	14	4	12	3	11	3	9	2	7	
11006	20		M	VC	C	XC	UC	UC	UC	7	23	5	15	3	12	3	10	2	8	2	7	1.7	6	1.4	5	1.2	4
	30		M	C	C	VC	XC	UC	UC	9	29	6	19	4	15	4	12	3	10	2	8	2	7	1.7	6	1.5	5
	40		M	M	M	M	VC	XC	XC	10	33	7	22	5	17	4	14	3	11	3	10	2	8	2	7	1.7	6
	50		M	M	M	M	VC	XC	XC	11	37	7	25	6	19	5	16	4	12	3	11	3	9	2	7	1.9	6
	60		M	M	M	M	C	VC	VC	12	40	8	27	6	20	5	17	4	13	3	12	3	10	2	8	2	7
	70			M	M	M	VC	XC	XC	13	44	9	29	7	22	5	18	4	15	4	13	3	11	3	9	2	7
	80			M	M	M	C	VC	VC	14	47	9	31	7	23	6	20	5	16	4	13	4	12	3	9	2	8
90			F	M	M	C	VC	VC	15	50	10	33	7	25	6	21	5	17	4	14	4	12	3	10	2	8	
11008	20		M	VC	C	XC	UC	UC	UC	9	30	6	20	4	15	4	12	3	10	3	8	2	7	1.8	6	1.5	5
	30		M	C	C	VC	XC	UC	UC	11	36	7	24	5	18	5	15	4	12	3	10	3	9	2	7	1.8	6
	40		M	M	M	M	VC	XC	XC	12	42	8															